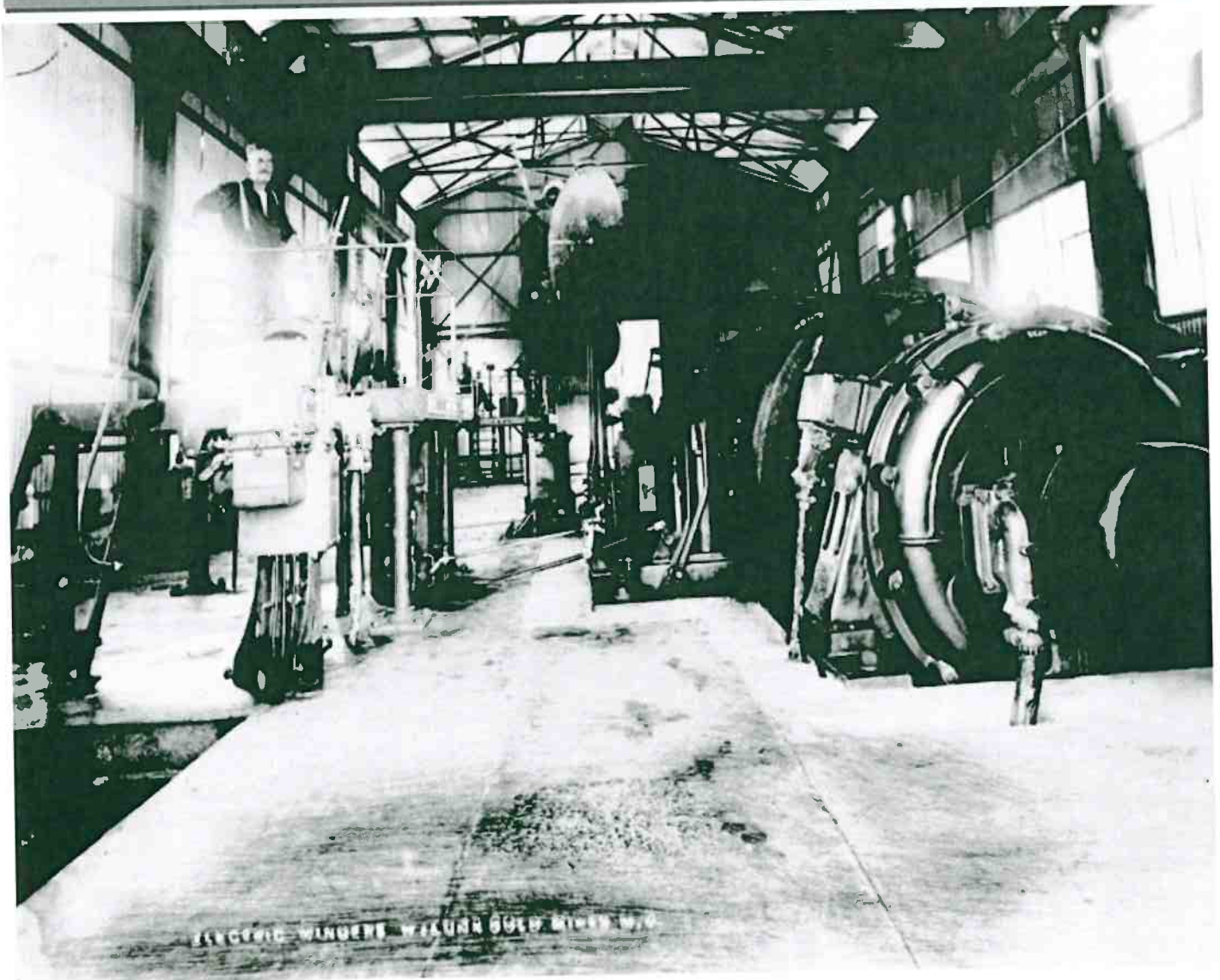


JANUARY 2017 NEWSLETTER

The Wiluna Wire



Electric Winders Wiluna Gold Mines WA

EVERYONE IS WELCOME!

Hello and welcome to the January edition of the **Wiluna Wire**. In this edition we have submissions from a number of Wiluna agencies and individuals. We would love to make the **Wiluna Wire** into an informative, interesting and entertaining newsletter, that includes submissions from all sections and ages of the Wiluna community. The newsletter will only be as good as the submissions we receive!

If you have any feedback, suggestions and or submissions, please come into the Wiluna Shire and have a chat. Contact can also be made by phone— 9981 8000 or email reception@wiluna.wa.gov.au

Farewell to Molloy Family

The Shire said a sad farewell to Dave and his wife Joanne and son Callum who have left us for pastures new.

Dave and Joanne have been a part of the Wiluna Community since 2009. Dave worked originally at the school as the Design & Technology teacher and then as the Manager of the Durack TAFE Campus here in Wiluna until starting work as the Shire Community Development Coordinator for Events, Communication and Tourism. Joanne worked as a Teachers Aide before her stint at the local Wiluna Police station as Customer Service Officer until they welcomed their son Callum into the world.

Dave and Joanne will be sorely missed by Shire staff and the Community at large but we wish them all the best for their future endeavours.



Position Vacant

**Shire OF
Wiluna**



GENERAL HAND / RANGER

FULL TIME - \$45,000 to \$65,000 pa

The preferred candidate will have experience and knowledge of Wiluna and the local community.

The Shire of Wiluna is seeking a full time worker as a General Hand with the Shire's Works and Community Services Departments. The successful candidate will also receive professional training to perform ranger duties as required.

This position is an excellent opportunity for someone to receive on the job training to develop the necessary skills to start their career as a professional ranger.

Previous experience as a General Hand and Ranger duties would be an advantage but is not considered a necessity for this position.

This Position does NOT include Shire housing or private use of a vehicle.

For more information please contact Tracey Luke or Katrina Boylan on (08) 99818000 or email admin@wiluna.wa.gov.au

All written applications must be received at the Shire Office by 4.00pm on Friday, 27 January 2017.

Baffled police end elderly driver's mad Canning Stock Route bid

Liam Croy - The West Australian on October 9, 2016, 11:31 am

SHARE TWEET WHATSAPP EMAIL ...

An elderly Perth man had to be rescued twice during a poorly planned attempt to travel the length of the Canning Stock Route.



VIDEO [Sinkhole swallows car](#)

Local police say the man was determined to travel from Wiluna to Halls Creek and appeared to have little grasp on how close he had come to dying.

It is not known exactly when he set off on his journey but Balgo Senior Sergeant Don Cooper said he ran into trouble near Well 38 when his car's battery went flat.

Members of Kunawarritji community went to his aid, giving him a new battery and urging him to follow them back to the community.

Instead, he continued along the stock route.

His plans came unstuck again about 260km further along the route near Well 45.

This time, it was Sen. Sgt Cooper and his colleague who went to his rescue, leaving their station on Wednesday and reaching him on Thursday morning.

"He had no water, no food and he'd broken down again," Sen. Sgt Cooper said.

"He had some fuel left but not much. He wouldn't have made it to Billiluna 300km away.

"So he's in his 80s, in a vehicle with one battery travelling along a stock route outside of tourist season."

Even then, the man was argumentative with police because he wanted to complete the drive.

As police escorted the man to the nearest community, one of his tyres was punctured.

He was unable to change the tyre with the tools he was carrying.

Sen. Sgt Cooper said it was an important reminder that driving through remote WA was different to driving "roadhouse to roadhouse" around Australia.

"First off, travel in the tourist season when other people are there," he said.

"Travel in groups, have a proper vehicle and at the absolute minimum have dual batteries and proper tyres.

"He didn't know to put his radio on channel 40, he didn't know the tourist season had stopped and really, he had no idea how close he was to dying.

"He's just a bloke who got an idea in his head and tackled something he wasn't prepared for."

The West Australian



SHIRE OF WILUNA—RANGER



DOG & CAT REGISTRATIONS ARE NOW DUE— 1st November 2016

All dogs over the age of three (3) months and Cats over the age of six (6) months, in the Shire of Wiluna are required to be registered. Registrations are due prior to the 1st of November each year.

Renewals can be done by attending the Shire Office between 8.00am and 4.30pm, Monday to Friday.

REGISTER NOW!

DOGS	1 YEAR	3 YEAR	LIFE	PENSIONER
UNSTERILISED	\$50	\$120	\$250	50 % OFF
STERILISED	\$20	\$42.50	\$100	ALL FEES

CATS	1 YEAR	3 YEAR	LIFE	PENSIONER
ALL CATS MUST BE STERILISED				50 % OFF
STERILISED	\$20	\$42.50	\$100	ALL FEES



**Shire OF
Wiluna**

CONGRATULATIONS

Annette Williams has been selected for the 2017 REVEALED exhibition at Fremantle Art Centre.

Annette and Rhonda Williams were "Artists in Residence" at Mt Keith.

Artists add colour to camp life

Martu artists put their work and talent on show at an exhibition at BHP Nickel West Mt Keith miners village near Leinster this week.

Birriliburu artists Annette Williams and Rhonda Williams painted artworks and sold original pieces to workers at the village from Monday to Wednesday, bringing a touch of culture to the hustle and bustle of mining camp life at the Northern Goldfields operation.

Shire of Wiluna executive manager of community and economic development Tracey Luke said the exhibition presented an opportunity for Martu artists from the Northern Goldfields.

"The Mt Keith exhibition is a great opportunity to take the artists' work to a different audience, and to spread the word about the high-quality work they are producing," she said.

"It's a good partnership with Mt



Birriliburu artist Annette Williams with BHP Nickel West community principal Christie Bell-Bray.

Keith and I'd like to thank Nickel West for hosting us." Promoted by the Shire of Wiluna's Tjukurba Art Gallery, the Birriliburu artists paint in a variety of styles and palettes, depicting stories encompassing a culture of country, history

and lifestyle. Images of the Canning Stock Route, opened in the early 1900s by pioneer Alfred Canning, are often central to their works.

Nickel West community principal Christie Bell-Bray said the ex-

hibition produced a joint benefit for workers at the remote village and the artists.

"The exhibition is something that benefits the Wiluna gallery, the artists and our people," she said.



Q&A

Which five airports get the thumbs up from author and “philosopher of everyday life” **Alain de Botton**?

1 Oslo Airport, Norway

One of the only airports in the world to remember that what passengers need most of all is contact with natural materials. So the entire roof is, amazingly, built out of wood, like an upturned Viking ship.

2 Barajas Airport, Madrid, Spain

A beautiful light-filled hall, decked out in a playful palette of colours – modern architecture finally delivers on its promises.

3 Terminal 5, Heathrow, UK

It's not perfect because of the tight spot it's in, sandwiched between runways, but the steel spans on the

ceiling at Terminal 5 make one gasp, and the shopping is jetlag-defying.

4 Zurich Airport, Switzerland

Trust the Swiss to deliver a serene cathedral of perfectly moulded concrete, which works like clockwork.

5 Wiluna Airport, Western Australia

Airports are often at their most charming when they are tiny, and they don't come much tinier than this. You feel like you are back in the pioneering days of air travel as the smell of kerosene drifts across the runway. No duty-free.

Alain de Botton's *A Week At The Airport: A Heathrow Diary* (A&U, \$25) is out now



TAKING
APPLICATIONS
NOW...

The West Australian Aboriginal Leadership Program is a comprehensive leadership development program covering areas such as business development, corporate governance, networking, entrepreneurship, vision and goal setting, strategic planning, negotiation, resilience, economic development, improving self-awareness, succession planning, relationship building and stakeholder engagement.

The program will aim to recruit high quality participants from across the Mid West region. The ideal participant is either working as or engaged as one of the following:

- DIRECTOR/ OWNER OF A BUSINESS
- EMPLOYED WITHIN A COMMUNITY, GOVERNMENT OR PRIVATE ENTERPRISE
- VOLUNTEER FOR COMMUNITY ORGANISATION OR COUNCIL

For expressions of interest please go to our website, email or call us:
waalp.com.au | applications@waalp.com.au | 0439 345 363



Government of Western Australia
Department of Regional Development



MID WEST
DEVELOPMENT
COMMISSION

IPS
INDIGENOUS
PROFESSIONAL
SERVICES



Melissa Price MP

Federal Member for Durack



Learning Potential app-dated guide for families

13th December 2016

A parenting app popular with Durack families is getting a refresh in time for the school holidays thanks to the Turnbull Government, with hundreds of articles, activity suggestions and advice to help families with children of all ages.

The *Learning Potential* app has been downloaded 118,000 times since it launched in August last year and the latest updates come in time for the school holidays with a range of new features and 45 new articles that include a variety of activity ideas and parenting tips developed based on data of the information families had been seeking out.

Member for Durack Melissa Price said local families had been enjoying *Learning Potential's* the advice and suggested things to do with their children.

"The *Learning Potential* app is a trusted resource for parents across the country because it uses the latest national and international research and is designed in collaboration with expert agencies, like the Australian Curriculum, Assessment and Reporting Authority and the Office of the Children's E-Safety Commissioner," Ms Price said.

"The *Learning Potential* app is free to download and easy to use and it helps parents in their role as the first teachers in any child's life and better allows them to complement the work of teachers and schools.

"In the face of Australia's declining rankings in international education benchmarks, the Turnbull Government's *Learning Potential* app gives parents ways to easily tap and share advice, tips and ideas on being actively involved in their child's learning and to ultimately help boost their personal skills and education outcomes.

"Whether they're in the high chair or when they're in high school, the Turnbull Government's *Learning Potential* app has hundreds of articles, games and tips designed to help parents no matter what stage their children are at."

Minister for Education and Training Simon Birmingham said the app offered parents trusted advice for any of the burning questions they had.

"As a dad I know what it can feel like to be looking for guidance but not wanting to sift through some of the dubious parenting advice you find on the internet," Minister Birmingham said.

"Our *Learning Potential* app helps fill that gap of trusted advice and helps encourage parents to try new ways of engaging with their children.

"Our updates build on the success of the popular *Learning Potential* app with new articles on a range of topics like how to teach children to read using phonics, whether handwriting or typing notes is best and managing stress during exams and activities for little ones designed to improve motor skills or encourage a love of science."

For further information or to download the app visit learningpotential.gov.au

END



Ambulance visit



Cooking!



WILTU NGARA



WILUNA REMOTE
COMMUNITY SCHOOL

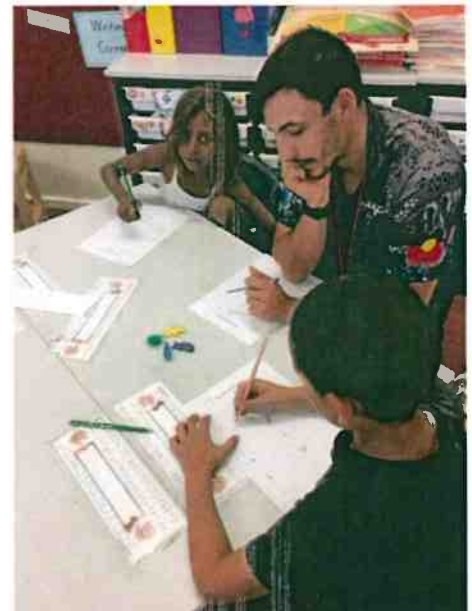
STAND STRONG



Kalgoorlie camp, visit to the Super Pit.



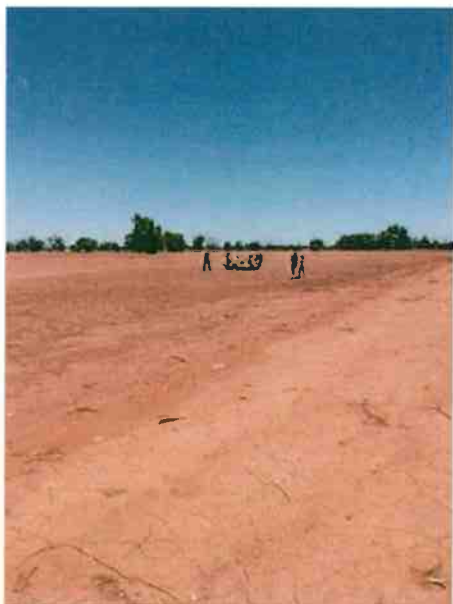
Martu Ranges visit the school





Bush trip - Claypans and Martuwa

Chelodina steindachneri
(commonly called a dinner plate turtle)





High School girls basketball at Meekatharra



Ray Ryder workshop with high school students

NORTHERN STAR RESOURCES – JUNDEE OPERATIONS UPDATES



Martu Ranger Program

Jundee has been fortunate and proud to continue our long standing relationship with the Martu Rangers out at our operation in 2016. During the year we saw the Rangers involved in many projects which included exploration rehabilitation, pastoral, water monitoring and biodiversity management. Recently a few of the Rangers were also trained on how to undertake compliance monitoring. The Rangers have made a great contribution to our Jundee operation in past few years and 2016 was no different, the men worked long hours but also picked up a few additional skills along the way and also taught us about this country that we work in. Thanks to CDNTS and Richard Gordine for facilitating the program and thanks to the Rangers for the fantastic work that was undertaken in 2016, Abe and Ash are looking forward to working with you in 2017.



NORTHERN STAR RESOURCES – JUNDEE OPERATIONS UPDATES

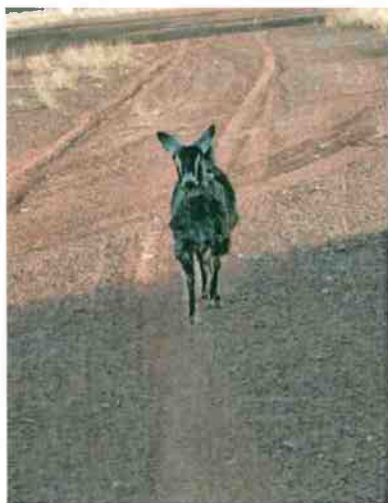


Northern Star Jundee Stakeholder Community Dinner

On Tuesday 8th December Jundee hosted a Stakeholder Community Dinner. Our Stakeholders, people who work with us and regularly and engages with us here at Jundee, were invited for an evening out. Our new catering contractor Northern Rise served a fantastic dinner and we enjoyed a few drinks and entertainment from singer Johannah Grace as well as a few Jundee locals on the open mic. Thanks to Tjukurba Art Gallery and Tracey Luke for bringing out the art that was displayed on the evening. Thank you to all those who could attend and who helped to make the night a great success.



Wiluna Photographer's Page



1.



2.



3.



4.



5.



6.



7.



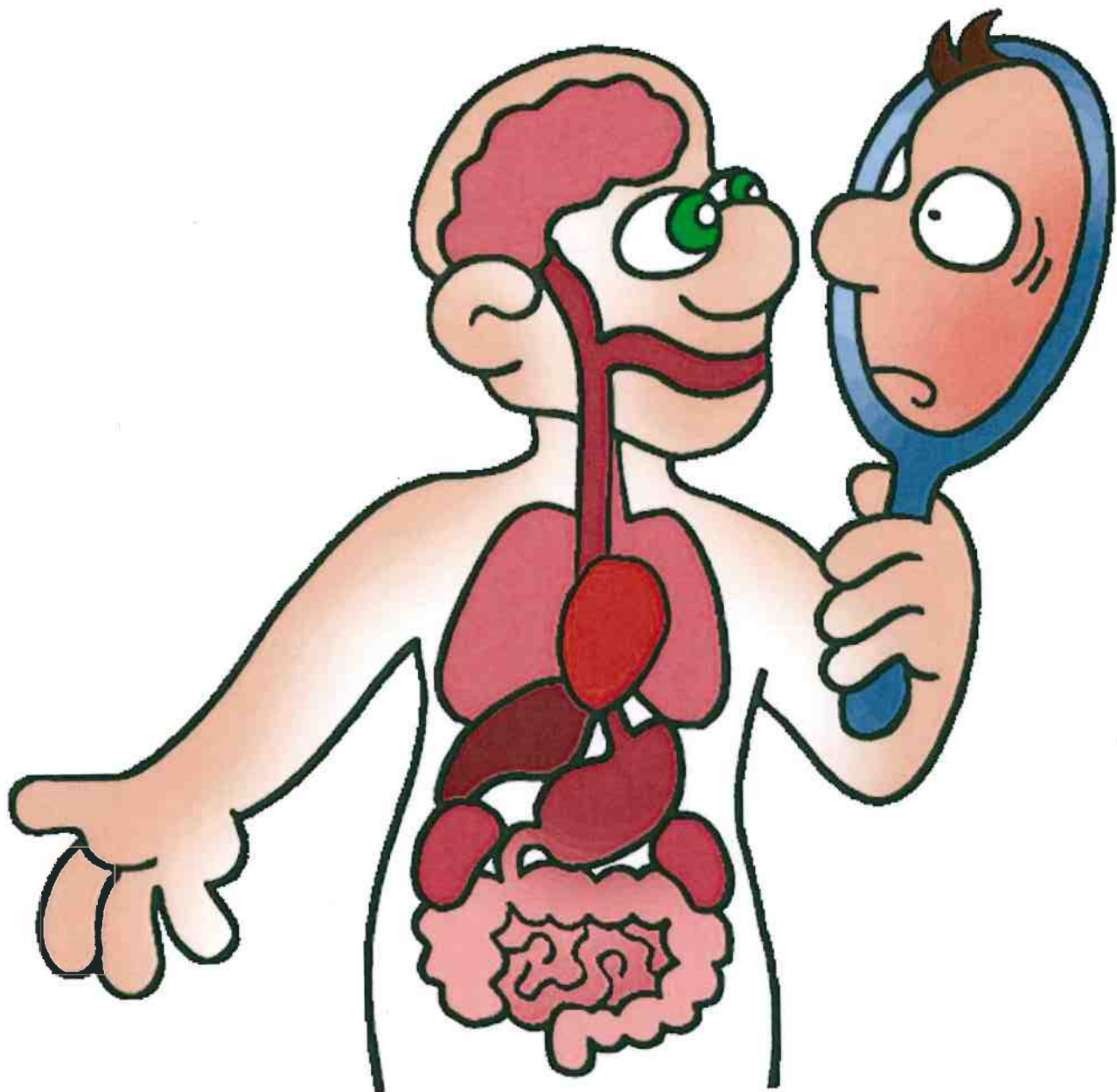
8.

1. In need of the LOO!
2. Who shut the gate!
3. Jump over I guess!
4. Made it!
5. Paper isn't easy to get!
6. It's coming!
7. Feel much better now!
8. All done now back to eating!

If you would like your photos included, please see the contact details on the last page.

Martu Wangka - internal organs

Draw a line from the word to the body part.



- Kapurartji (kidneys)
 - Yalu (liver)
- Nyuru (intestines)
 - Kurturtu (heart)
 - Kiri-kiri (lungs)
 - Lirri (throat)
- Nyunyunyu (brain)
 - Kuru (eye)
- Tjuni (stomach)
 - Yiiku (face)

Complete the picture by drawing a line from A-Z



Sudoku, is a logic-based, combinatorial number-placement puzzle. The objective is to fill a 9×9 grid with digits so that each column, each row, and each of the nine 3×3 sub-grids that compose the grid contains all of the digits from 1 to 9. The puzzle setter provides a partially completed grid, which for a well-posed puzzle has a unique solution.

	8						9	7
			3			1		
3		9		1			6	5
				9			1	
	4	5	2			8		9
6					5		3	4
			4					
7								
	2	3			1			









Easy

		9	8	7			5	
		5			6	4	7	
		8						2
	6			8	4			
8			2					
					3	7		
			7			5		1
2							6	
	3				2			

Medium



Ngangganawili
Aboriginal Health Service

9am	Morning Routines & Song Time				
9.15am					<p>Inside Activity Time</p> <ul style="list-style-type: none"> • Craft activities • Play area • Painting • Play dough • Construction / building <p>Puzzles and Books</p> 
10am	Fruit & Outside Activity Time				
	<p>Monday:</p> <p>Painting and water table</p>	<p>Tuesday:</p> <p>Obstacle course</p> 	<p>Wednesday:</p> <p>Painting and water table</p>	<p>Thursday:</p> <p>Bikes and water table</p> 	<p>Friday:</p> <p>Swimming pool</p> 
11.30am	Pack Away Time				

Sudoku Solutions

2	8	1	5	4	6	3	9	7
4	5	6	3	7	9	1	8	2
3	7	9	8	1	2	4	6	5
8	3	2	7	9	4	5	1	6
1	4	5	2	6	3	8	7	9
6	9	7	1	8	5	2	3	4
5	6	8	4	3	7	9	2	1
7	1	4	9	2	8	6	5	3
9	2	3	6	5	1	7	4	8

Easy

4	2	9	8	7	1	6	5	3
3	1	5	9	2	6	4	7	8
6	7	8	3	4	5	9	1	2
7	6	3	1	8	4	2	9	5
8	5	4	2	9	7	1	3	6
1	9	2	5	6	3	7	8	4
9	4	6	7	3	8	5	2	1
2	8	1	4	5	9	3	6	7
5	3	7	6	1	2	8	4	9

Medium

Buy, Sell, Trade & Wanted



You can have your ad here next month,
contact Katrina at the Shire



If you have any items to advertise or requests, please contact Katrina Boylan
(email admin@wiluna.wa.gov.au or phone 9981 8000)