



**YOUR AD HERE**  
Please contact Katrina  
([admin@wiluna.wa.gov.au](mailto:admin@wiluna.wa.gov.au))  
Or ring 9981 8000 if you wish to  
put in an ad



**Advertise Here**

Contact us for details.

**JANUARY 2018 NEWSLETTER**

*The Wiluna Wire*



*Aerial view of Wiluna*

# EVERYONE IS WELCOME!

Hello and welcome to the January edition of the **Wiluna Wire**. In this edition we have submissions from a number of Wiluna agencies and individuals. We would love to make the **Wiluna Wire** into an informative, interesting and entertaining newsletter, that includes submissions from all sections and ages of the Wiluna community. The newsletter will only be as good as the submissions we receive!

If you have any feedback, suggestions and or submissions, please come into the Wiluna Shire and have a chat. Contact can also be made by phone— 9981 8000 or email [admin@wiluna.wa.gov.au](mailto:admin@wiluna.wa.gov.au)

Regards Wiluna Shire staff

## Climate Statistics for Wiluna—January

**Mean Maximum Temperature (°C)**  
38.0

**Mean Minimum Temperature (°C)**  
22.9

**Mean Rainfall (mm)**  
37.0

**Mean number of days of rain  $\geq$  1mm**  
3.3

**Mean number of clear days**  
13.4

**Mean number of cloudy days**  
5.2

**Mean 9am temperature (°C)**  
30.0

**Mean 9am relative humidity (%)**  
35

**Mean 9am wind speed (km/hr)**  
12.4

**Mean 3pm temperature (°C)**  
36.5

**Mean 3pm relative humidity (%)**  
23

**Mean 3pm wind speed (km/hr)**  
10.9



### Nutritional analysis (per serving):

- 93 calories
- 3g protein
- 1g fat
- 22g carbohydrate
- 4g fiber
- 0mg cholesterol
- 98mg sodium

Serves: 1

Serving size: 1 veggie bowl

**Note:** Nutritional analysis may vary depending on ingredient brands used.

**Prep time:** about 10 minutes

### What you need:

- 1 green, yellow, or red pepper, washed
- 1 bunch of celery, washed
- 1 carrot, washed and peeled
- your favorite salad dressing

### Utensils:

- knife (you'll need help from your adult assistant)
- cutting board

### What to do:

1. Cut the pepper in half (from side to side). Clean out the seeds and gunk from the inside. Now you have two pieces. One will be your pepper-shaped bowl.
2. Cut the other half of the pepper into skinny slices.
3. Cut the carrot into skinny sticks about 4" long.
4. Cut celery into skinny sticks so each one is about 4" long.
5. Put a little salad dressing in the bottom of your pepper bowl.
6. Put celery sticks, carrot sticks, and pepper slices into the pepper bowl.
7. Now you've got a portable veggie treat! You can pull out the veggies and eat them with a little dressing. Then when you're finished with the veggies, it's time to eat the bowl!



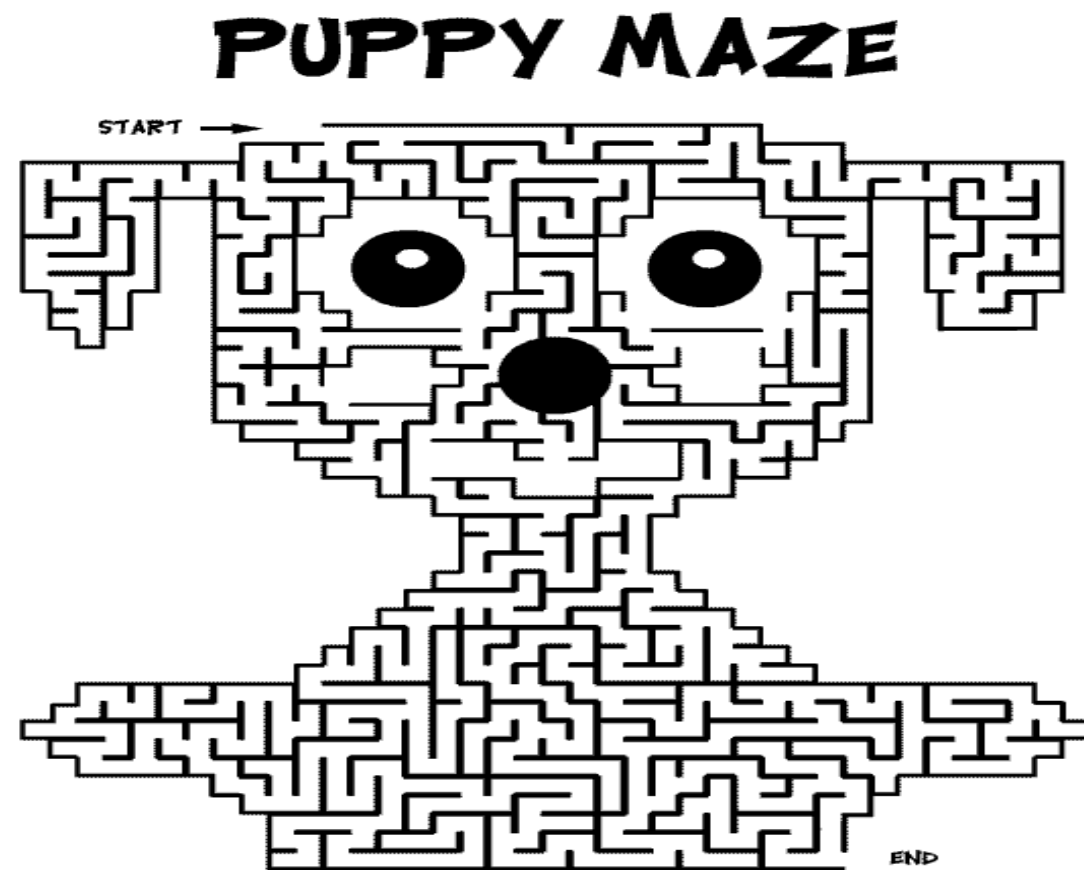
## Sudoku Answers

5	7	1	6	8	3	2	9	4
4	8	2	5	9	7	6	1	3
3	9	6	4	1	2	7	5	8
6	3	4	8	7	1	9	2	5
9	5	7	2	4	6	8	3	1
1	2	8	3	5	9	4	6	7
2	4	9	7	3	5	1	8	6
7	1	5	9	6	8	3	4	2
8	6	3	1	2	4	5	7	9

No 1

4	1	7	8	5	9	3	6	2
6	5	8	3	7	2	1	9	4
9	2	3	4	6	1	5	7	8
5	6	9	2	8	3	4	1	7
8	7	4	1	9	5	2	3	6
1	3	2	6	4	7	8	5	9
3	9	5	7	2	4	6	8	1
2	8	1	9	3	6	7	4	5
7	4	6	5	1	8	9	2	3

No 2



Copyright 2005, theKidzpage.com

## VISITORS TO WA

The Road Safety Commission has released a brochure called "On The Road WA" which is also available on-line from the following website:

[www.rsc.wa.gov.au/Your-Safety/Safety-opics/Visitors-to-WA](http://www.rsc.wa.gov.au/Your-Safety/Safety-opics/Visitors-to-WA)

It was written in collaboration with the Italian consulate after the unfortunate passing of an Italian tourist in a traffic crash near Balingup. The brochures are written in Italian, German, Mandarin, Malay, Korean, French & English.

### Welcome to Western Australia!

Western Australia (WA) is the largest state in our vast, arid continent, covering an area of 2.5 million square kilometres – that's bigger than the whole of Western Europe or four times the size of Texas. We want you to enjoy your stay, but more importantly we want you to stay safe.

There are many things you need to be aware of before you drive in the city or around the outback. Take some time to read the following pages to ensure your trip is as enjoyable and safe as possible!

**110kmh**

is the maximum speed limit on open roads in WA.

**60**

metre trucks are common in outback WA.

**200m**

is the distance you must travel behind a car & caravan more than 7.5m long.

**4**

litres of water minimum, per person per day when on outback trips.

### On the Road - Safe Driving Guide



#### ON THE ROAD - English

Download A guide to driving on WA roads (PDF, 672 KB)



#### ON THE ROAD - German

Download A guide to driving on WA roads (PDF, 720 KB)



#### ON THE ROAD - French

Download A guide to driving on WA roads (PDF, 801 KB)



#### ON THE ROAD - Italian

Download A guide to driving on WA roads (PDF, 730 KB)



#### ON THE ROAD - Malay

Download A guide to driving on WA roads (PDF, 725 KB)



#### ON THE ROAD - Korean

Download A guide to driving on WA roads (PDF, 1.061 KB)



#### ON THE ROAD - Mandarin

Download A guide to driving on WA roads (PDF, 924 KB)



## CEO's Report

I hope everyone had a safe and happy Christmas and New Year. The Shire had reopened for business on the 8 January 2018 after closing down for its traditional break between Christmas and New Year. 2018 is expected to be a busy time for the Shire due to the renovation of the New Administration Centre, construction of new staff houses and the undertaking of a significant roads program.

The Shire's next major community event will be the annual Australia Day Breakfast at the Wiluna Public Swimming Pool on Friday 26 January 2018.

It with pleasure that I can announce the appointment of Warren Olsen to the position of Deputy Chief Executive Officer and Angela Hoy as the Executive Manager Technical Services. Both officers have previously been acting in their roles but now have been appointed to a three-year contract with the Shire.

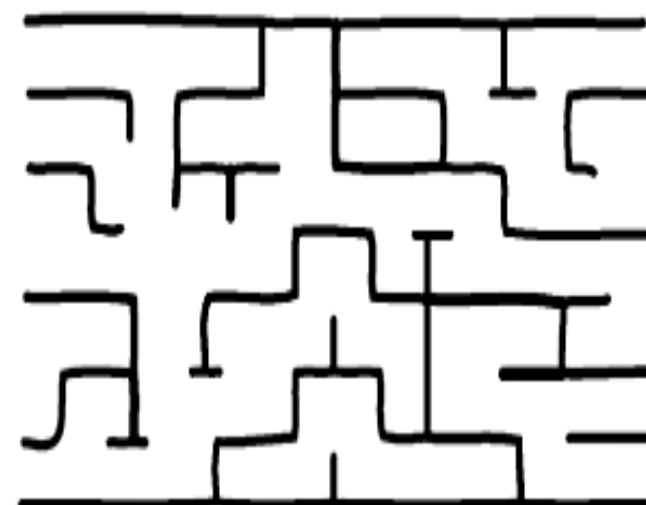
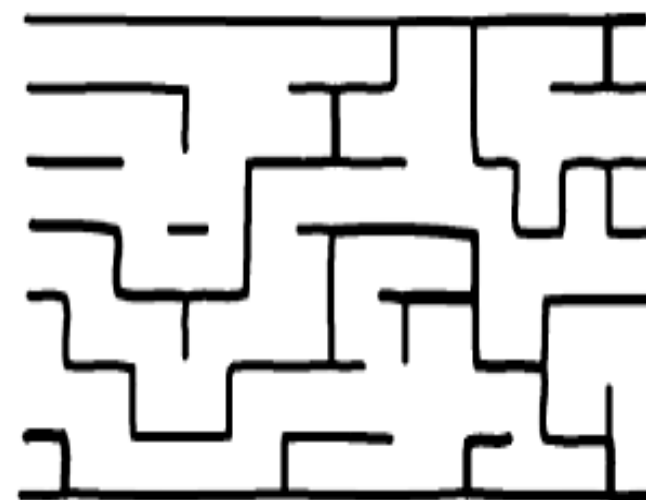
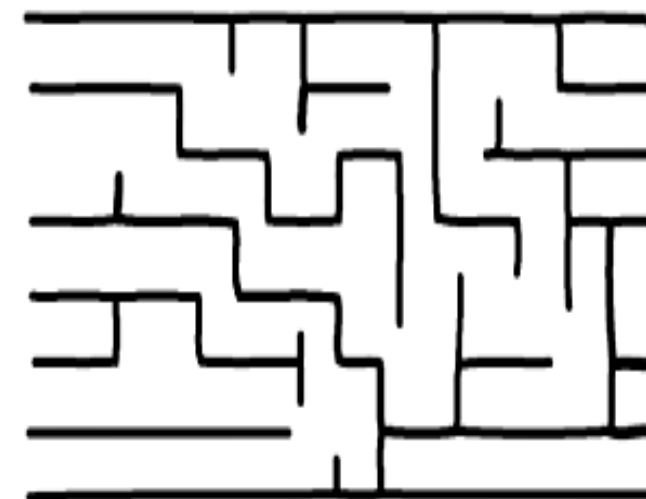
Now to a little sad news, as Tracey Luke the former Executive Manager Community and Cultural Services and Gina Hunt the current Administration Support Officer (Records) have recently resigned from their position with the Shire. I would like to take the opportunity to thank them both for their services to the Wiluna community and wish them all the best in their future endeavours.

A reminder that the Shire will be taking a more proactive approach in the enforcement of the Dog Act in the coming weeks. Therefore, all residents and visitors must ensure that their pets are kept on a lead when walking in public areas such as road reserves and footpaths. Any dog found to be wandering the streets will be impounded. Once a dog has been impounded by the Shire, it can only be released after the owner pays the full amount of any impoundment fees, penalties and the animal must be registered.



## Kid's Pages

### Hungry Animals



Help the animals find their food!



Joke Page

The most wasted  
of all days  
is the one  
without  
**Laughter**  
-E.E.Cummings

**LIFE IS  
BETTER  
WHEN  
YOU'RE  
LAUGHING.**

IF YOU  
**LAUGH**  
A LOT,  
WHEN YOU GET OLDER  
YOUR WRINKLES WILL BE  
IN THE RIGHT PLACES.

**I NEED TO SEE A  
DENTIST**



**ONE OF MY CANINES  
IS GETTING LOOSE**

**WHAT DO YOU CALL A  
COW IN AN EARTHQUAKE?**



**A MILK SHAKE!**

**WHAT IS A CAT'S FAVORITE  
COLOR?**



**PURR-PLE!**

**I did the math**



**We can't afford the cat**



**THE BEAGLES**



**ON THE INTERNET**



**nobody knows you're a dog**

**It just like...**



**exploded or something...  
I'm Adopted???**



**OMG!!!**

**You mean you're NOT my real mom??**

**YOU KNOW IT'S HOT**



**WHEN EVEN THE DOG  
STARTS TO MELT**



The old Club Hotel is rapidly changing and will become the new Shire Administration Offices. We foresee making the move about mid year. The community is reminded that it is a construction site and to stay clear.





# The Wiluna Miner 1941-47

The year 1941 saw Wiluna slowing down. The *Wiluna Miner* was reduced to 4 pages only; sporting and social news was scarce as the war news poured in and filled over 3 pages.

Petrol rationing had been in for some time, and Finch's Wiluna Garage was suggesting that trucks have the latest gas producers fitted to help eke out the meagre petrol ration allowed to motorists.

The Empire Day Ball in May, held under the auspices of the Parents' and Citizens' Association, ran true to form, and was a huge success. The floor at the Moonlight Hall was crowded, and the orchestra excelled itself. It was not until 2.30am that they played "The National Anthem."

A Black-out Dance, symbolic of the black-outs in other parts of the Empire to the tune of "When the Lights of London Shine Again," was very popular and caused people to think deeply.

A Popular Girl "Queen Competition" held over a period of some weeks had raised over one thousand eight hundred pounds, and a Gold Queen had been proclaimed with pomp and splendor.

In 1942, the population had decreased noticeably as wives and families left the town when their husbands had been called up. There was nothing to keep them there, and they moved to be closer to their own families. There was no organized association football, sport was curtailed, and local news became scarce.

The Government was asking local War Fundraising Committees to urge their townspeople to contribute to the war effort by supporting a special Liberty Loan. From February to May, Wiluna responded in a magnificent manner, and were presented with a special Red Pennant for winning Category 2. Results of the winners of the three groups were:-

**Group One. Towns over 5,000 Residents**

Kalgoorlie. 60,202 pounds. Per Capita 5 pounds

**Group Two. Towns 2,500 to 5,000 Residents**

Wiluna. 258,990 pounds. Per Capita 54 pounds

**Group Three. Towns less than 2,500**

Beverley. 21,800 pounds. Per Capita 10 pounds

Wiluna also won the Blue Pennant for exceeding their quota.

Workers at Wiluna were under Man Power Regulations because of the by-products, arsenic and antimony, being produced for the war effort, (but men were still joining up.) There was concern at Wiluna Mines in May when the Federal parliament was considering draining manpower from the goldfields. Motions to Parliament were drafted by all mining companies against the proposed Man Power proposals.

At Wiluna, pastoralists were unable to shear their sheep as most shearers had been called up. Unless shearers were temporarily released from the army the shearing industry would not be able to deliver the wool so badly needed for clothing to help the war effort.

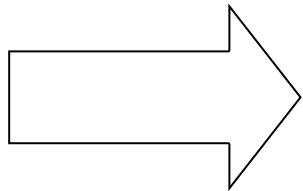
Towards the end of the year a special meeting was held at the Capitol Hall when Mr Hickey, the Wiluna Man Power officer, explained in detail the ramifications of the National Security Act as regards the manpowering of miners.

Later, Mr Carroll, manager of Wiluna Gold Mines addressed the meeting stressing damages caused by "absenteeism". His remarks were vigorous, and to the point. He said Wiluna Gold

## Sudoku

Sudoku, is a logic-based, combinatorial number-placement puzzle. The objective is to fill a 9×9 grid with digits so that each column, each row, and each of the nine 3×3 subgrids that compose the grid contains all of the digits from 1 to 9. The puzzle setter provides a partially completed grid, which for a well-posed puzzle has a unique solution.

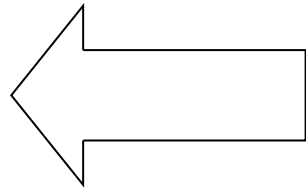
No. 1  
Easy



5			6			2		
	8			7		1	3	
	9	6				7		
6		4			1		2	5
				4				
1						4		
2		9		3		1		
7		5	9					
	6		1					

				9			2	
6		8				5		8
		3						
				3	4	1		
	7			5		3		
		2	6	7				
			7	2				
						7	4	5
		6		1				

No 2  
Hard



## Wiluna Swimming Pool Hours

### New Times

Monday	5am-7am
	10am-12noon
	1.30pm-6pm
Tuesday	5am-7am
	10am-12noon
	1.30pm-6pm
Wednesday	CLOSED
Thursday	5am-7am
	10am-12noon
	1.30pm-6pm
Friday	5am-7am
	10am-12noon
	1.30pm-6pm
Weekends and Public Holidays	9am-12noon
	1.30pm-6pm
School Holiday weekdays	5am-7am
	10am-12noon
	1.30pm-6pm

Mines had been declared a "protected undertaking" as it produced two vital products for the war effort. Wiluna was the only place in the Commonwealth to produce one of these products so badly needed not only in this country, but also in the United States. Wiluna held many records; the largest amount subscribed to War Loans; for its collection of rubber, glass, metal and paper on behalf of the various patriotic funds. There was a need for something to be done as regards a full maintenance of working hours in order to produce materials vital to the war effort. He could produce a graph which would show a considerable reduction in working hours and production.

And so the year 1942 closed with gloomy predictions for the town.

In April of 1943, William Pollett Morgan, aged 17 years, employed as a Junior Porter at the railway station, was found dead on the platform in an obscure place not visible from the office. He was fitting an electric light globe to a post about 15 feet high, and apparently fell, striking a picket fence in the descent. He had been dead for some time, although a search had previously been made.

Mr R Ellerton Binns told shareholders at the meeting of Wiluna Gold Corporation that the full impact of higher prices and supplies would soon be felt. With development work suspended through the shortage of labour, any further deterioration of the position could only result in a corresponding serious decline in production and profits.

Mr & Mrs AG Paterson of Yandil Station were leaving at the end of May 1943, after a stay of twenty years. Many functions, private and public, had been given in their honour. The newspaper reported:-

Mr & Mrs Paterson have been most helpful with every movement functioning in the town and district. Their station home was often the venue for tennis afternoons, or a Sunday's drive, when a welcome was always assured. Mr Paterson was Chairman of the Roads Board for several terms, and Vice Chairman the rest of the time. The fact that he was a Road Board member for the whole of his time constitutes a record, and in this capacity he did yeoman service in the early days of the second coming of the town. He was also Chairman of the Vermin Board, Pastoral Board, Rifle Club, Town Tennis Club, Returned Servicemens' League, and was always willing to listen to any suggestions put forward for the improvement of the town and district, and to back up the support in a practical way. Mrs Paterson with her bright and cheery disposition would be greatly missed from the many activities of the town.

The heralded competition for "Miss Wiluna, 1943," was held at the Guest House Carnival on behalf of Mr Bill Read, of the Mine Ugly Men. Staged as an open-air theatre, a floodlit platform on the tennis courts, with trees and flowering shrubs as a backdrop was the setting for an array of gallant girls in various coloured swim suits. Ten girls entered the contest, and the winner was selected by popular acclaim in the way of cash votes. Miss Beryl Keys was the winner, thus acquiring the celebrated Glory Box. Val Smith was second and Joan Dowson was third. Every girls was in receipt of a well earned prize.

The year 1943 ended, and 1944 began with very little news being reported.

On October 6th, a farewell dinner was tendered to Constable George Nicolson at the Commercial Hotel by the committee of the Boy's Athletic Club.. The Vice President of the Club, Mr Gee, spoke of the enormous amount of good Constable Nicolson had done for the town. He referred particularly to his influence with the young people whose early training meant so much in their future welfare. In proposing a toast to Constable Nicolson Mr Hickey, who presided, said it was with a tinge of sadness he received the news of the transfer of Constable Nicolson who had been in Wiluna for about 7 years and during that that time he had endeared himself to almost every person in town. He had carried out his duties with impartiality and reason. This gathering was representative of all walks of life in Wiluna, as an indication of the esteem and respect in which he had been held. He had shown devotion to duty, and was a conscientious officer, and the manner in which he had carried out his duties could not fail to put him in line for promotion.

There were several more send-offs for prominent people, including one for Mr WB Philippson,

Accountant from Wiluna Gold Mines, who had played a prominent part in the life of Wiluna for a number of years.

Sadly, during this period there were several deaths by suicide, involving the drinking of cyanide by one man and by a rifle in another case.

The year 1944 can to a close with very little news to report, as the numbers dwindled noticeably.

A wedding of interest took place on 6th January 1945 between Constable C "Tubby" Eaton and Miss Doreen Pitt. The ceremony was performed by Father Sharry at the Catholic Church.

At a Road Board meeting in mid January, Mr HH Carroll notified members that it was the intention of the Wiluna Gold Mines to curtail operations early in February. The next day the Chairman of the Road Board, Mr AL Gerick, sent the following telegram to William Marshall, MLA, which read "Residents perturbed at apparent lack of interest by the Government in what is reported to be unavoidable curtailment in Wiluna Gold Mines." Mr Marshall replied. "Been in touch with Mr Panton and the Federal Government for weeks past stop. Carroll can give you all the information." Wiluna was still supplying the badly needed arsenic at £20 per ton, whereas imported arsenic cost £80. This was still not enough consideration for the Government to help keep the mine going.

On Friday, May 11th, *The Wiluna Miner* announced with large headlines:-

#### **GERMANY SURRENDERS**

At last the war in Europe is over, and it now needs a full concentration on the Japanese. A Thanksgiving Celebration was held at Memorial Park on Sunday, 13th May. The order of the service was that issued under the Authority of the Archbishop of Canterbury and York. The service was in the hand of Rev K Doust (Methodist Church) and Rev J Morris-Thomas (Church of England).

On August 6th, the American White House announced that the Army Air force had dropped an atomic bomb on Japan, containing more power than 20,000 tons of TNT and producing 2,000 more times a blast than the largest bomb previously used. *The Wiluna Miner* announced on Friday, August 17:-

#### **JAPAN SURRENDERS**

When the radio announced at 6.45am on Wednesday that the Prime Minister of England would deliver an address at seven o'clock that morning those fortunate enough to be listening in were keyed up to learn the expected official news of the complete surrender of the Japanese forces, the last remaining foe of the Allies. Wiluna responded within a few minutes of the announcement by sounding the siren, which, ironically, was installed to warn residents of a Japanese air raid, and was now being used to herald the utter collapse of this foe. Whistles, blasts, trumpets and tooters were sounded throughout the town, and within a few minutes everyone knew the expected news. There were mixed feelings, some rejoicing in the event of a World Peace once again, others remembering the loss of loved ones, while others were looking to the future, and the rehabilitation of the world. Many tears, too, were shed in the relief of peace after six anxious years of war.

The print on *The Wiluna Miner* had been deteriorating over the months, but without any prior warning the following notice appeared on Friday January 31, 1947:-

#### **PUBLIC NOTICE**

We regret that owing to shortage of staff, and inability to purchase spare parts—either in Australia or America—we are compelled to discontinue production of this newspapers as from this date. We sincerely thank readers advertisers and clients generally for past patronage.



#### **A NEW AND BETTER HEALTH TEST FOR WOMEN**

**Talk to your health worker today – for yourself, your family and your community.**

The Pap test has been replaced with a new test, which Aboriginal and Torres Strait Islander women now only have to do every five years.

The test is quick and simple, and you can always ask for a female health worker.

If you have ever had a Pap test before, the way this test is done will feel the same. It might be a bit uncomfortable, but it shouldn't hurt.

**The new test is safe, and is better.**

Although it will feel the same for you, the new test is better.

It's safe to have this new test every five years, instead of every two like the old Pap test.

Your health care team will get your results about two weeks after your test and may contact you to talk about your results.

#### **When do I need this next test?**

If you're a woman aged 25-74 years, you should have a test every five years. For most women your next test is due two years after your last Pap test, and then it will be every five years.

You'll receive an invitation three months before your next test is due. If you're unsure when your next test is due, talk to your health worker.

*Talk to your health worker for more information or if you have any questions.*

*(Note: you may want to include specific details for local health services here)*

*You can also find out more at [www.cancerscreening.gov.au/cervical](http://www.cancerscreening.gov.au/cervical) or by calling 131 556.*

**Regular tests as part of your women's health checks is the best way to stay healthy and strong for yourself, your family and your community. Talk to your health worker today.**





## NEW CHILD CARE PACKAGE

### INTERMEDIARY ARTICLE (Round One)

#### **Important changes to child care fee assistance – more support for more families.**

Did you know from July 2018 there will be a New Child Care Package which will include changes to child care fee assistance?

From 2 July 2018, the current Child Care Rebate and Child Care Benefit will be replaced by a single Child Care Subsidy.

Changes to the annual cap (limit) on the amount of child care subsidy you can claim will make child care more affordable for most families.

The Package includes a \$1.2 billion Safety Net to give the most vulnerable and disadvantaged children, including those from regional and remote communities, a strong start through access to quality early learning and child care.

The level of Child Care Subsidy that can be accessed will depend on combined family income, the activity level of both parents (based on the parent who does the least amount of activity) and the type of child care the family uses.

Recognised activities include but are not limited to: paid work (including leave, like maternity leave), approved study or training, actively seeking work, volunteering and self-employment.

The current system doesn't change until 2 July 2018. We'll be sharing more information with you about what you need to do to prepare for the change in early 2018.

The Shire of Wiluna is passionate about providing our local community with important information about the change and how it will affect you, your family and your little ones.

To find out more, and to estimate how the changes will affect your family, visit [education.gov.au/childcare](http://education.gov.au/childcare). The online estimator you'll find there is easy to use and only takes a few minutes to complete.

Thus ended a great record of the history of Wiluna as it rose in the "second coming" in 1924, and went through to the demise of the great Wiluna Gold Mines Ltd in 1947—and the slowing down of the wonderful town of Wiluna. Naturally, this was not the end of the little town, but it remained just that—a little town at the end of a railway line—now dismantled—an on the edge of the harsh, rolling desert.



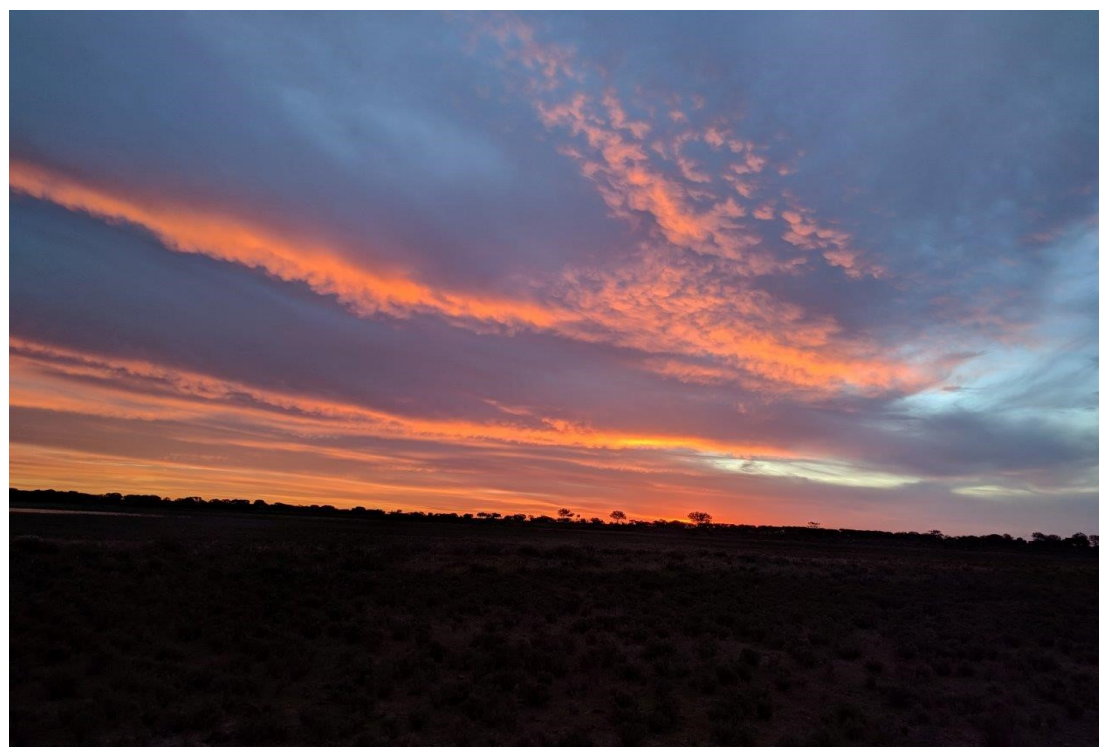


# Photo Page

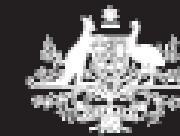
**The following photos have been submitted by some local station people, townies and some of our miners. If you would like to share a photo please send them to: [admin@wiluna.wa.gov.au](mailto:admin@wiluna.wa.gov.au)**



A fabulous shot of lightning taken by Lennie Ross



A terrific sunset taken by Sami Ahmed, Project Engineer at Blackham Resources



Australian Government  
Department of Human Services

## Expression of Interest

### Agent Services – Wiluna

The Australian Government Department of Human Services is seeking Expressions of Interest from organisations interested in providing Agent services in Wiluna.

Agents are contracted to deliver services and programs on behalf of the department.

Agents play a vital role in the delivery of our services to communities in rural and remote Australia. Agents provide a face-to-face information service and free self-help facilities including an internet enabled computer, telephone and facsimile/photocopier/printer to help people do their business with us.

A remuneration package will be negotiated with the successful applicant depending on the agreed hours per week that services are provided.

Training and equipment is provided.

Visit [humanservices.gov.au](http://humanservices.gov.au) and search for Agent EOI to view:

- the selection criteria
- general information on Agent services
- the terms and conditions relating to this opportunity.

For further information please contact Adam Moffat, Rural Services Manager, on 08 9194 9601.

The closing date for Expressions of Interest is 5 pm, Thursday, 25 January 2018.

Expressions of Interest must be forwarded to: Adam Moffat, Rural Services Manager, [awa.agent.support@humanservices.gov.au](mailto:awa.agent.support@humanservices.gov.au)



[humanservices.gov.au](http://humanservices.gov.au)



## Award winning community support starts here



Rachel Newberry Bindoon College 2017 graduate with Murlpirrmarra CEO Darren Patten.

Murlpirrmarra Connection was the winning recipient of the 2017 Indigenous Business of the Year at the Belmont and WA Small Business Awards Ceremony.



To Make Strong To Make Confident To Empower

Murlpirrmarra Connection is a not-for-profit organisation that exists to provide Aboriginal youth in the remote communities of Wiluna, Leonora and surrounding regions in Western Australia, with educational opportunities.

We coordinate an end-to-end process to ensure that our supported students do not "fall between the cracks" and stay engaged in school.

[www.murlpirrmarra.com.au](http://www.murlpirrmarra.com.au)

3703659m-IBRM181217

## WA Community Excellence AWARD WINNERS

## Supporting indigenous school engagement

Among the winners of the Belmont & Western Australian Small Business Awards 2017 was Murlpirrmarra Connection, a not-for-profit that provides Aboriginal youth in the remote communities of Wiluna, Leonora and surrounding regions with educational opportunities.

The word Murlpirrmarra means 'to make strong', 'to make confident' and 'to empower' in the Martu Aboriginal language.

Murlpirrmarra Connection was founded by its CEO and Director Darren Patten and Director Mick Wilson.

Murlpirrmarra Connection coordinates end-to-end processes with other key service providers to ensure its supported students - male and female - do not fall between the cracks and stay engaged in school.

To help engage and re-engage supported youth in school, Murlpirrmarra Connection delivers a range of community, sporting and health and wellness programs.

The programs are designed to ensure these young indigenous men and women are prepared for their transition beyond school into tertiary studies, training and employment.

Where circumstance arises, Murlpirrmarra Connection facilitates the rehabilitation of its

supported students' volatile substance abuse issues.

"Our vision is to provide a critical mass of educated, employed and empowered community members to break the cycle of social disadvantage that exists for these communities," Mr Patten said.

2017 saw Murlpirrmarra Connection take two of its 2016 graduating Year 12 students to Malaysia for its Cultural Awareness Graduate Tour, which rewards and enlightens its graduates for their endeavours.

One of Murlpirrmarra Connection's feature community events is the Wiluna Martu Eagles and Dalkeith Nedlands Junior Football Club Cultural Football Weekend. This year's event was held on the WA Day weekend in Dwellingup and consisted of bonding activities such as archery, laser tag, obstacle courses and quiz nights, culminating in a football match on the Sunday.

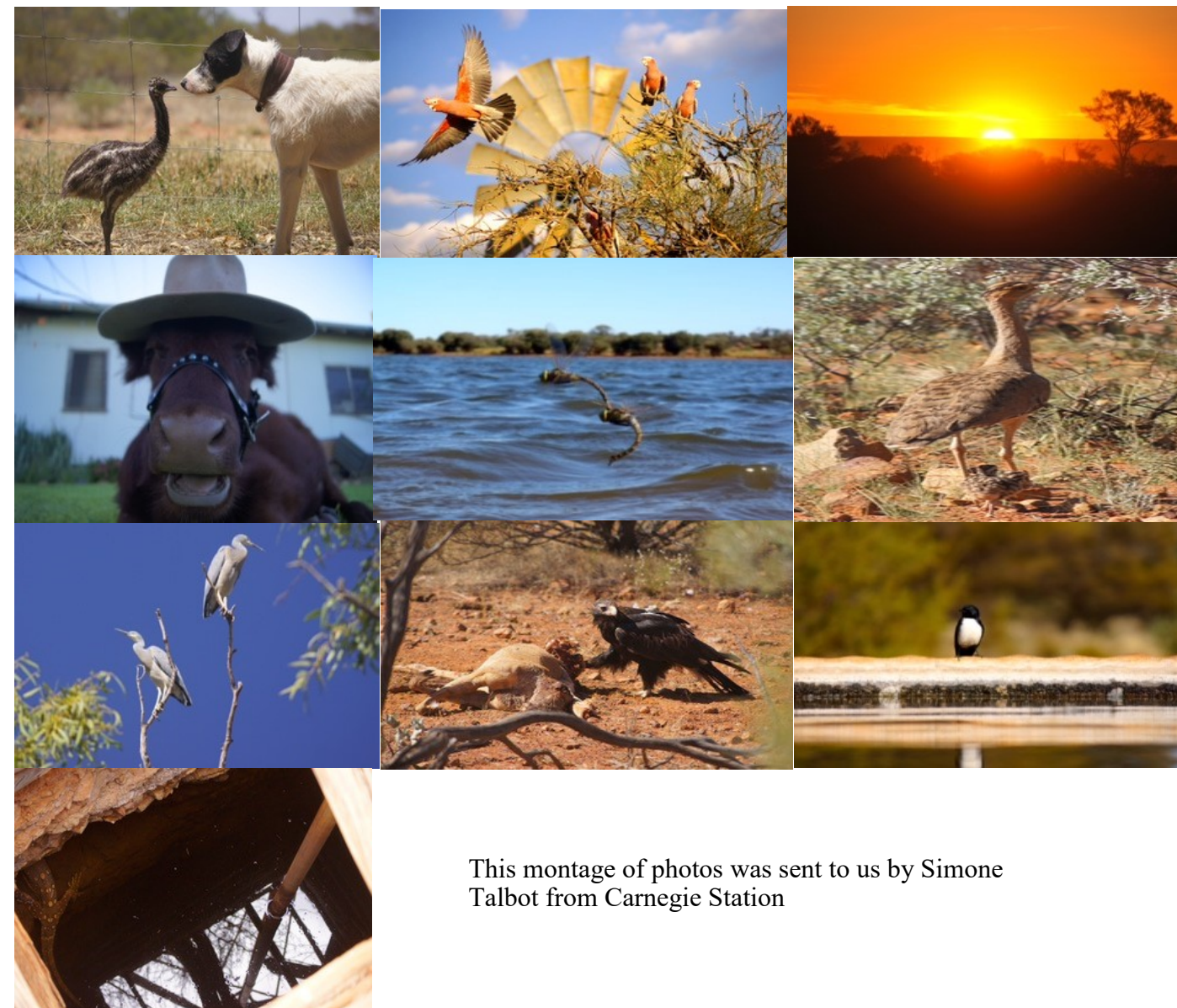
2018 sees the event moved back to Wiluna for its 10th anniversary.

Murlpirrmarra Connection has to date supported 14 students through to year 12 completion or graduation and has an average attendance rate of 91 per cent.

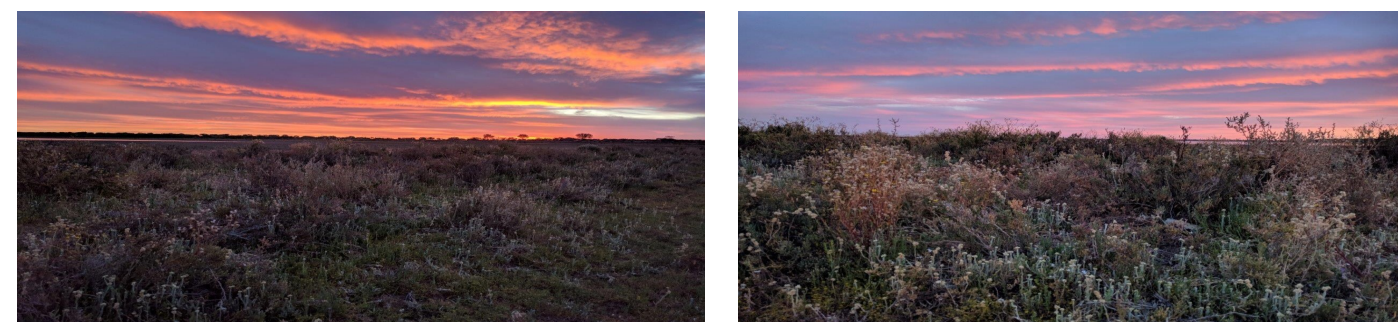
For more information, visit [www.murlpirrmarra.com.au](http://www.murlpirrmarra.com.au) or call 0408 030 821.



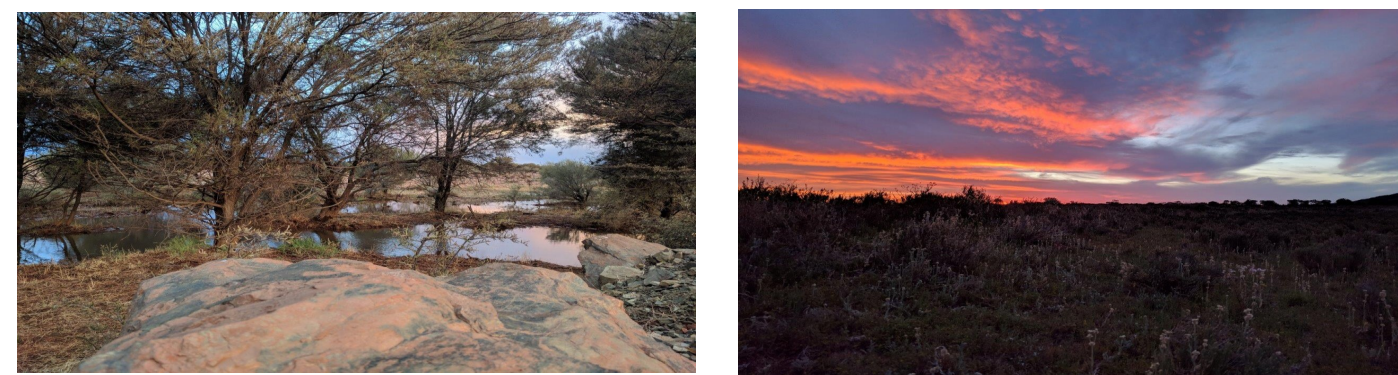
Murlpirrmarra Connection personnel and 2016 graduates with their Malaysian hosts on the 2017 Malaysian Cultural Awareness Graduate Tour in May. (L-R): Murlpirrmarra Connection CEO/Founder Darren Patten, Teck Wong, Murlpirrmarra graduate Shaquille Morton, Tan Sri Dato Tien Seng Law, Murlpirrmarra graduate Shequiel Patch, Murlpirrmarra Director Mick Wilson, Murlpirrmarra Senior Administrative Coordinator Claire Laan and Syaiful Fadly.



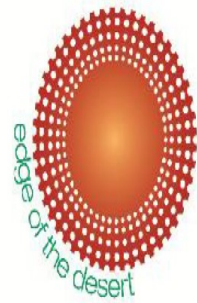
This montage of photos was sent to us by Simone Talbot from Carnegie Station



These are all scenes from Lake Violet, taken by Sami Ahmed.







## Roadworks Tenders

The following tenders are invited for various roadworks (and airport sealing) projects within the Shire of Wiluna:

- RFT 2017-06 Supply of Plant with Operators for Road Flood Damage Repairs
- RFT 2017-07 Supply of Supervision Services for Road Flood Damage Repairs
- RFT 2017-12 Supply of Maintenance Grading Services
- RFT 2017-13 Rural Roads Construction
- RFT 2017-14 Complete Sealing Service

Tender (RFT) documents can be obtained from the Shire's tender portal at <https://www.tenderlink.com/wiluna/>. Enquiries can be directed to the Shire's Executive Manager Technical Services, Mrs Angela Hoy, ph. 0429 817 010 or email [emts@wiluna.wa.gov.au](mailto:emts@wiluna.wa.gov.au).

Tenders must be submitted in the form prescribed in the RFT document, in PDF format uploaded to the Shire's tender portal <https://www.tenderlink.com/wiluna/>. In some cases, paper tenders may be hand-delivered by the tenderer to the tender box located in the Shire's temporary office at 30 Scotia Street Wiluna.

Tenders by fax or email will not be accepted. Do not send tenders by post or courier as they will be rejected if they are not received before the closing time.

Tenders must be submitted by 2pm WST on Thursday 8 February 2018. Late tenders will be rejected without consideration of their merits. The Council will not necessarily accept the lowest or any tender.

## NEWS FLASH

McGowan reverses education cuts, backflips on Schools of the Air closure after backlash.

## NEWS

### McGowan reverses education cuts, backflips on Schools of the Air closure after backlash

By Emily Piesse, Jessica Strutt and Jessica Hayes



The WA Government has backflipped on a controversial plan to shut down the state's Schools of the Air (SOTA), following an angry backlash from families in isolated and regional areas. Premier Mark McGowan and Education Minister Sue Ellery revealed the Government would reverse its decision to close all five schools at the end of this year, saying the Government had taken its efforts to find savings too far.

**"We made a rushed decision that left many Western Australians feeling anxious and distressed," Mr McGowan said.**

"We've listened to their concerns and over the break took time to reflect on the impact of these measures.

His comments were echoed by Ms Ellery, who admitted the cuts went too far in a message on Twitter explaining the backflip.

"We got the balance wrong — while we have to make budget savings, we went too far on the impact on students.





Department of  
Primary Industries and  
Regional Development

## Media release

1 DECEMBER 2017

### TRAVELLERS REMINDED ABOUT BAITING PROGRAMS TO KEEP PETS SAFE

People travelling around Western Australia with pets are reminded to be aware of their surroundings as 1080 baiting programs may be underway in the area.

Those travelling along the Eyre Highway from Southern Cross to Eucla and in the Pilbara, Kimberley and Carnarvon regions should be particularly aware to prevent accidental pet poisoning.

The 1080 baits are used in WA's agricultural and pastoral regions to control feral pests such as foxes, wild dogs and rabbits.

Department of Primary Industries and Regional Development invasive species policy officer Andrew Reeves said baiting was important to protect livestock and native animals from attacks by wild dogs.

"Landholders generally bait in autumn and spring to protect livestock and crops, however, travellers should be aware that baiting can occur year-round and a cautious approach must be taken when travelling with domestic pets," Mr Reeves said.

"Baits are placed away from roadsides and warning signs will be in place at property entry points, however, pet owners may not always see warning signs when exercising their dogs.

"The 1080 bait is used because most native animals have a degree of tolerance to the chemical as it is found naturally in some plants.

"However, if ingested by domestic pets, such as cats and dogs, it can be fatal, which is why we're reminding travellers to be aware of their surroundings."

Department of Biodiversity, Conservation and Attractions pests program coordinator, Dennis Rafferty said the 1080 meat baits were attractive even to well-trained pets, especially dogs.

"Travelling around WA with your pet should be an enjoyable time," Mr Rafferty said.

"There are some simple guidelines to follow to reduce the risk of accidental 1080 poisoning.

"Keep your pets on a lead or fitted with a muzzle at all times, particularly if you stop on the side of the road, in a parking bay or overnight camping area.

"Don't let your pet scavenge for food and remember pets are not allowed to be taken into national parks where baiting is often undertaken.

"Also, keep an eye out for signs indicating 1080 baits are being used in the area."

Travellers who suspect their pet has taken bait should induce vomiting and immediately seek veterinary assistance.

If there are any suspect cases of 1080 poisoning they should be reported to Gerard Leddin on [9363 4019](tel:93634019) or email [rcp.applications@dprid.wa.gov.au](mailto:rcp.applications@dprid.wa.gov.au).

#### Media contacts:

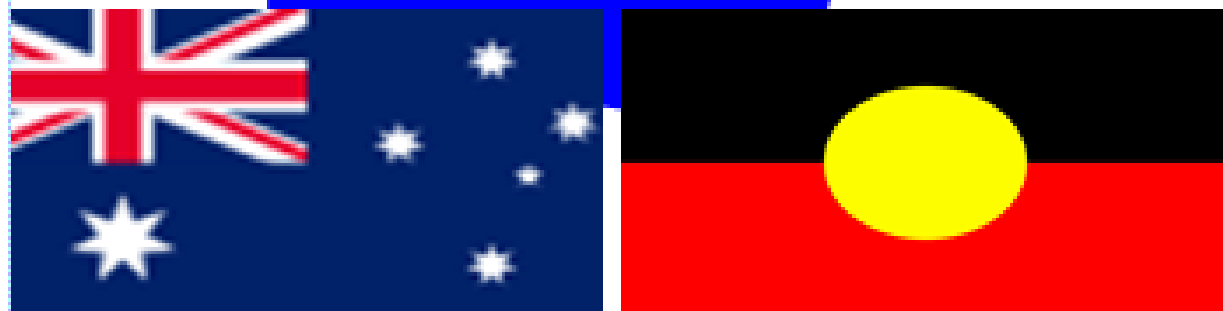
DPIRD media liaison, Jodie Thomson/Katrina Bowers, +61 (0)8 9368 3937

DBCA media liaison, +61 (0)8 9219 9999

# Breakfast at the Pool



**8-10am  
Friday  
26 Jan 2017**



## CASUAL TRAINEESHIP TJUKURBA ART GALLERY

The Shire of Wiluna is seeking a Casual Trainee for the Tjukurba Art Gallery. This position is for up to 25 hours per week / 42 weeks per year and offers the opportunity to received the required training for a career in the arts sector.

Duties would include, but are not limited to:

- Assisting visitors to the Art Centre
- Facilitate sales using an eftpos machine
- Keep accurate record of sales for accounts
- Technical activities such as canvas stretching & paint preparation
- Organise purchase of art supplies and distribution to artists
- Maintain a well organized and clean art centre studio
- Storing digital photography of artworks
- Cataloguing in Stories Art Money (SAM) database
- Exhibition preparations
- Packaging & freighting of artwork
- Assisting with special events
- Client management

This position is an excellent opportunity for someone to acquire foundation skills in art centre operations. A background in art is preferable but not crucial.

Interested applicants should contact Sara Walker at the Art Gallery.



## Cyclone Joyce to Cross WA's Kimberley Coast as a Category One as risk of drenching rain for Perth



Cyclone Joyce is expected to fully cross the coast of Western Australia today as a significantly weaker system than predicted.

While the worst danger may be over for the Kimberley, Perth could feel the impact of the weather system next week with up to 50 millimetres of rain forecast to fall if the system tracks towards the city.

The category one storm had been skirting the Kimberley coast throughout the night.

Bureau of Meteorology forecaster Craig Earl-Spurr said it was unlikely to reach the previously expected strength of category three.

"It's passed Bidyadanga, but sitting near the coast it means that it hasn't strengthened overnight," he said.

"It's expected to continue moving towards the south-west as a category one, and continue to bring gales to the West Kimberley coast.

"Cyclones need time over water to strengthen, and with the previous forecast of it spending that time over water there was a greater risk of it being a stronger system

## Drenching could reach Perth

Bureau of Meteorology forecaster Callum Stuart said the next concern was possible flooding.

"I guess the bigger risk is when it moves inland through the eastern Pilbara and into the Gascoyne as well with those river catchments through there, so [we're] certainly looking at a similar rain impact," he said.

And Perth could be in for a drenching early next week — or maybe not.

"I don't think they're too concerned about flooding with that, but could be some pretty good falls if the system does track over us.

"However, as we've seen in the last 24 hours, there's still a bit of uncertainty so it could just as easily miss us."

If the deluge does come, it's expected to be in the range of 50 millimetres over the two days.



# We would like your feed back

The Shire is interested to hear from the community on what events they would like to see happening in Wiluna.

We have had the Merindas perform a concert, Mary G has entertained us, we've held fun runs, quiz nights and trash and treasure markets.

If there is anything you would like to suggest please drop us a line via email to [reception@wiluna.wa.gov.au](mailto:reception@wiluna.wa.gov.au) or come into the Shire.



# Position Vacant

Shire OF  
Wiluna



## ACCOUNTANT/FINANCE MANAGER

The Shire of Wiluna has an opportunity for an experienced local government accountant to join its small friendly staff and to lead its accounting team.

Located where the Canning Stock Route meets the Gunbarrel Highway in the remote Murchison goldfields region of Western Australia, the Shire of Wiluna covers 182,156km<sup>2</sup> of mining and pastoral land and also has good agricultural and service industry opportunities.

There are RPT flights from Perth three days per week and a direct sealed road link to Kalgoorlie.

The Shire has a small friendly staff and a management team that operates on a collegial basis.

The duties of the position will include, but are not limited to:

- ◇ Regular bank reconciliations,
- ◇ Producing the annual budget and budget reviews
- ◇ Producing the monthly and annual financial statements, and
- ◇ Overseeing the staff who perform the rates, debtors, creditors and payroll functions

You will be well supported by an experienced Deputy CEO and by an experienced CEO who is also an accountant.

The Shire will negotiate an attractive package (including free housing) with the successful applicant, commensurate with qualifications and experience.

Job details will be advertised shortly on the Wiluna Shire website ([www.wiluna.wa.gov.au](http://www.wiluna.wa.gov.au)) so please check the site for updates.

Further queries can be directed to Warren Olsen (DCEO) or Colin Bastow (CEO)





# Position Vacant

**Shire OF  
Wiluna**



## Sport and Recreation Officer

The Shire is seeking an enthusiastic and driven individual to fill the role of Sport and Recreation Officer.

Wiluna is 966km northeast of Perth and is situated on the edge of the desert at the gateway to the Canning Stock Route and Gunbarrel Highway. Even though Wiluna is remote there are endless opportunities to make a difference to this small town. Responsibilities will include but are not limited to:

- ◇ Implement, monitor and evaluate Shire's sports and recreation operational plans to ensure strong community participation sound financial management of events and activities.
- ◇ Manage the operation of Shire's sporting and recreation facilities and ensure they are maintained to appropriate standards and available for community use in accordance with stated hours of operation.
- ◇ Regularly promote Shire's sports and recreation programs to the community
- ◇ Contribute to annual budget preparation and monthly activity reporting to the Deputy CE
- ◇ Establish and maintain a productive and harmonious working environment for supporting staff and volunteers involved in the delivery of sports and recreation activities.
- ◇ Actively work with outside agencies including fitness and sporting associations to keep informed of current developments in the field and develop partnerships where appropriate that enhance services for the community.
- ◇ Develop, document, monitor and evaluate systems and procedures relating to the sports and recreation program.
- ◇ Participate in and contribute in a positive way to regular team meetings and report on progress against agreed work plans.
- ◇ Identify funding opportunities and prepare funding submissions as required.
- ◇ Carry out duties and responsibilities as directed by the Deputy CEO and the Chief Executive Officer.

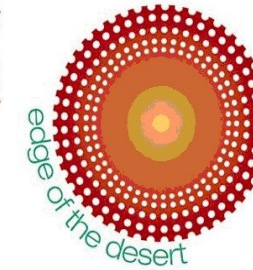
The Shire will negotiate an attractive package (including free housing) with the successful applicant, commensurate with qualifications and experience.

Job details will be advertised shortly on the Wiluna Shire website ([www.wiluna.wa.gov.au](http://www.wiluna.wa.gov.au)) so please check the site for updates.



# Position Vacant

**Shire OF  
Wiluna**



## Administration Support/Records Officer

The Administration Assistant will be responsible for providing clerical and secretarial support to staff within the Shire of Wiluna and includes filing and general clerical duties. We are looking for a competent Administration Assistant to provide personalized secretarial and administrative support in a well-organised and timely manner.

### Key Duties

- ◇ Act as the point of contact between the Executive Managers and internal/external clients.
- ◇ Undertake the tasks of receiving calls, taking messages and routing correspondence.
- ◇ Handle requests and queries appropriately.
- ◇ Maintain diary, arrange meetings and appointments and provide reminders.
- ◇ Participate in and contribute in a positive way to regular team meetings and report on progress against agreed work plans.
- ◇ Support the DCEO and other Executive Officers where required in carrying out administrative tasks as required.:
- ◇ Contribute to strategic planning, policy development, and risk management planning across the organisation.
- ◇ Contribute to ongoing improvement and review of administration systems and processes.
- ◇ Capture and Control correspondence including incoming and outgoing mail registration; responsibilities assigned for classifying, indexing and registration; file titling and file numbering conventions.
- ◇ File creation and closure – including assigned responsibility and procedures for both physical and automated file creation
- ◇ Authorised disposal of temporary records and transfer of state archived to the State Records Office
- ◇ Email management – including the capture, retention and authorised disposal of email messages to ensure accountability
- ◇ Collection of mail from the local post office on a daily basis and the distribution of mail to officers and councillors
- ◇ Mail out all out going mail at the local post office

The Shire will negotiate an attractive package (including free housing) with the successful applicant, commensurate with qualifications and experience.

Job details will be advertised shortly on the Wiluna Shire website ([www.wiluna.wa.gov.au](http://www.wiluna.wa.gov.au)) so please check the site for updates.

