

OCTOBER 2018 NEWSLETTER

Published 8/10/18

The Wiluna Wire



The first confirmed sighting of a night parrot in WA for nearly a century (Photo Bruce Greatwich)



EVERYONE IS WELCOME!

Hello and welcome to the October edition of the **Wiluna Wire**. In this edition we have submissions from a number of Wiluna agencies and individuals. We would love to make the **Wiluna Wire** into an informative, interesting and entertaining newsletter, that includes submissions from all sections and ages of the Wiluna community. The newsletter will only be as good as the submissions we receive!

If you have any feedback, suggestions and or submissions, please come into the Shire Administration Centre on Wotton Street and have a chat. Contact can also be made by phone—9981 8000 or email at—aa@wiluna.wa.gov.au with “The Wiluna Wire” in the subject line.

Regards

The Administration Team

THE CANNING-GUNBARREL DISCOVERY
CENTRE IS NOW CLOSED TO THE PUBLIC
AS OF THE 1ST OCTOBER 2018.
HOWEVER IF YOU WISH TO VISIT, PLEASE
MAKE AN APPOINTMENT FOR A PRIVATE
VIEWING.

TJUKURBA ART CENTRE REMAINS OPEN
TO THE PUBLIC AND ARTIST'S OVER THIS
PERIOD

Recreation Centre Activities for the Month

October 2018



| SUND AY | MONDAY | TUESD AY | WEDNESD AY | THURSD AY | FRID AY | SATURD AY |
|------------------------------------|------------------------------------------------------------------------|--------------------------------------------------------------|-------------------------------------------------------------------------|-------------------------------------------------------------|---------------------------------------------------------------------|-----------|
| | 1:Photography program 9-1pm DIN:3-7pm: Circuit 6-15 to 7-15pm | 2:Photography program 9-1pm DIN: 3-7PM | 3: Photography program 9-1pm DIN:3-7pm: Circuit 6-15 to 7-15pm | 4: Photography program 9-1pm DIN: 3-7PM | 5: Photography program Lunch 9am- 2pm The Greatest Showmen 3-430 | 6 |
| 7 Adult Work Out class 4-30- 6pm | 8:DIN: 3-7pm, Adult Circuit 6-15- 7-15pm | 9:Drop in 4-6pm: outside 6-7pm: Teenagers circuit 2-30 4pm | 10Forum 4-6pm Din 3-7pm, Adult Circuit 6-15 to 7-15pm | 11 Drop in 4-6pm: outside 6-7pm: Teenagers circuit 2-30 4pm | 12: Movie arvo Rex: rated M | 13 |
| 14: | 15: DIN: 3-7pm, Adult Circuit 6-15- 7-15pm | 16: Drop in 4-6pm: outside 6-7pm: Teenagers circuit 2-30 4pm | 17: DIN: 3-7pm, Adult Circuit 6-15- 7-15pm | 18:Drop in 4-6pm: outside 6-7pm: Teenagers circuit 2-30 4pm | 19 | 20 |
| 21: Adult Work Out class 4-30- 6pm | 22: DIN: 3-7pm, Adult Circuit 6-15- 7-15pm Tamihana | 23: Drop in 4-6pm: outside 6-7pm: Teenagers circuit 2-30 4pm | 2:Forum 9.am OCM 1.00PM DIN: 3-7pm Adult Circuit 6-15- 7-15pm | 25: DIN 4-30 TO 7PM Tevita Tamihana leave | 26 | 27 |
| 28 | 29: DIN 4-30 TO 7PM Tevita Tamihana leave | 30:DIN 4-30 TO 7PM Tevita Tamihana leave | 31:DIN 4-30 TO 7PM Tevita Tamihana leave | | | |
| | | | | | | |



CEO's Report

It's that time of year that everyone should be aware of possible contact with snakes as they are coming out of habitation.

Snakes Awareness

In spring and summer, many reptiles emerge to bask in the sun. During this time you should take precautions to minimise the chance of encountering snakes. Remember, snakes are an integral part of the natural environment and play an important role in wildlife ecosystems.

Precautions

- Take care in bushland and grassy areas.
- Walk and/or cycle in cleared areas only, where you can see the ground.
- When bushwalking, wear long trousers and boots or other enclosed footwear that preferably cover the ankles.
- Keep a watchful eye on the ground about a metre ahead of where you are walking, and avoid entering areas of long grass, rushes and undergrowth.
- Around your home remove long grass and items lying on the ground such as corrugated iron, which may provide cover for snakes.
- Reduce mice numbers around the house.

Contact 000 immediately if a snake bites you.

Do not approach or aggravate it in any way. Most bites occur when people accidentally step on snakes, or while attempting to kill them. As the warmer days of spring approach, snakes become more active as they leave their winter retreats in search of a mate and food.

If you find a snake in a garden or a house, contact Wildcare Helpline **(08) 9474 9055** to be referred to a reptile remover, or search online for a snake removal service near you. Advice can be provided by phoning the Parks and Wildlife on **(08) 9219 9840**.

Moonlight Hall

The Shire has held a number of successful events in the Moonlight Hall (new town Hall which is upstairs in the former Club Hotel) including the viewing of the AFL/NRL Grand Finals, congratulations West Coast Eagles and Sydney Roosters. The Moonlight Hall is available for hire (fees, bonds and conditions apply) to the public.

Hot Shop Available in Wiluna

The Shire has set aside one of the buildings at the Enterprise Centre (where Wirrpanda Foundation is located) to be used as a temporary (hot) shop. The reason for this is to encourage businesses to come or be started in Wiluna, even if this is for a short time such as a day or two. For further information on how to hire the hot office, please contact the Shire on (08) 9981 8000.

Government Offices Available for Hire

The Shire has four offices for temporary hire by state and federal agencies. The purpose of the office space is to encourage a closer working relationship between the Shire and other Government Agencies. These offices are located upstairs at the shire's new Administration Centre (former Club Hotel). For further details on how to rent an office, please contact the Shire on (08) 9981 8000.

To ensure the safety and health of all persons who use Shire building and facilities, these venues are smoke free.

Regards

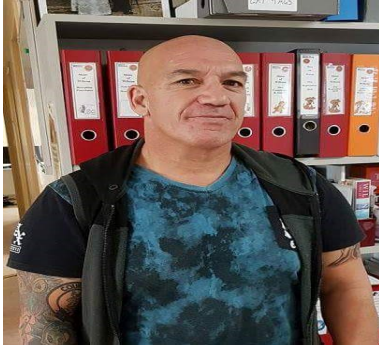
Colin Bastow

CEO

Ngangganawili Aboriginal Health Service

Events Calendar

| October 2018 | | | | | | |
|-------------------|-------------------|--------------------|------------------------------------------|--------------------|-----|-----|
| MON | TUE | WED | THU | FRI | SAT | SUN |
| 24 | 25 | 26 | 27 | 28 | 29 | 30 |
| 1 | 2 | 3 | 4 Cardiology Visit with K Woollard | 5 | 6 | 7 |
| 8 RFDS Dentist | 9 RFDS Dentist | 10 RFDS Dentist | 11 RFDS Dentist | 12 RFDS Dentist | 13 | 14 |
| 15 | 16 | 17 | 18 | 19 | 20 | 21 |
| 22 | 23 | 24 | 25 | 26 | 27 | 28 |
| 29 | 30 | 31 | 1 | 2 | 3 | |



Recreation & Leisure Coordinator Report

Rec Centre was open for a total of 12 days this month, numbers down due to organising Back to Wiluna Community concert, Shire party and Queens Birthday. Overall it has been full on, setting up the external programs prior too going to Perth as well as maintaining contact with the children and community as a whole.

We have continued to run our drop-in for the children as normal on the days when I have been away with the Rec Centre being opened by Tevita later in the afternoon. I have noticed some of my regular children have not been in, I believe they are either attending to sorry business or living away from community at this time.

We have also had some new children into town who have been bullying the smaller children, I have spoken to a couple of parents re this issue as their children have been going straight home after school due to this behaviour. I will be talking with some of the elders/parents to gauge support to have a community meeting to address this issue.

The children that have been using the Rec Centre have taken on board the behaviour expectations required to use this facility, as of late I have not pulled the children up regarding their inside voices so it's been a loud six months at times. Perseverance has seen a change being made by all.

Big things happen when small steps are continually taken

Community concert: Remains and the Dessert Stars Tuesday 17/09/2018. The boys rolled into Wiluna Tuesday morning and set about making themselves comfortable in the Rec Centre, they set up their band gears under the awning looking out to the basketball court. The boys had almost the whole town attend their show, the big numbers may be due to the fact several members of the Dessert Stars had family connections in Wiluna. Linaire and the Band manager did a count up during the concert and both counted around 150 adults and between 50-60 children. It really seems like our town numbers swelled that night for the big occasion. Thank you to Linaire for looking after the boys with food and hospitality over two days and Tevita for taking on the extra work load during my absence.

Issue:

We have started posting our Shire of Wiluna Alcohol Free event poster around the fence line of the Rec Centre, this will be done whenever we hold an event any where in Wiluna, as organiser's we can only inform the people of our expectations, Linaire did ask adults to leave the alcohol free area and was met with a positive response. The key here for us will be to maintain our consistency and expectations so those that are used to doing things their way start to do things our way.

FOOD FOR THOUGHT

It may be more beneficial for us as a town, to have our local police walking the beat and being seen in and amongst the people so they can see and feel a police presence when we run Community events. The off shoot to that would be the community putting names and faces to the police that are working in Wiluna, it's always good to meet during good occasions as apposed to bad ones.

Circuits: We only ran 6 sessions during the month due to the events, with a total of 16 participants, we did not run any circuits for the teenagers as they were attending Tafe which sees them finishing school later in the afternoon.
Gym was attended by 12 individuals with 41 combined training sessions throughout the month.

One Community movie was shown; the community watched Wonder prior to the Shire of Wiluna fire works display at the end of our Back to Wiluna Celebrations. We had a crowd of around 110 locals attend. The Community enjoyed watching the movie on the big blow up screen set up in the front of the Rec Centre, I had comments from one of the locals that the movie made her cry, just what we were looking for as Wonder is a bit of a tear maker as far as movies go. The beauty of using this space to hold an outside movie was the fact that a big majority of the children used the outside courts to play basketball while those that wanted to watch the movie could do so in peace and quiet.

School Holiday Program: Term 3, 9am to 1pm

Week 1: Tuesday 25th to Friday 28th Week 2: Monday 1st to Friday 5th

We had the pleasure, company and expertise off Martine Perret (photography) and Johnathon Mustard (Music and Drama) for the term three, the children learnt how to operate a digital camera along with many techniques for taking photos. Johnathon spent his time putting sound and music together to accompany the photo art work created by the children, the art and music was put together in a video package that was shown to the children and parents on Friday 5th. We ended the program with lunch and a viewing for all. We had steady numbers attend the program throughout the two weeks, the children that opted out of the program had access to the main room for art and computers along with sports gear to use on the outside courts.

Movie Friday week 1 the children watched Son of Big Foot, Week 2 we watched Oz the Great and Powerful to end the term three break.

We continued to use the Rec Centre to have our Drop in option for the children in the afternoon Monday to Thursday through out the two week break.

Moonlight Hall:

We held two functions in the Moonlight Hall this month, the AFL preliminary final and the Grand final.

Preliminary Final: Saturday 22/09/2018, We had around 30 locals attend the preliminary final, it was good to see a real cross section of the town come to watch the WCE beat up their opposition, a great result for the locals, tradies and Shire workers that attended the day.

Grand Final day Saturday 29/09/2018: AFL Sunday 30/09/2018 NRL

Saturday saw a good size crowd come down to enjoy the game and support the only team in town, the day was a massive success with lots of laughter, tears and emotions flowing as the WCE took 79min to secure the game and bring the Grand Final cup back to the West.

Sunday saw a smaller group relax out while the Sydney Rooster put a strangle hold on the Melbourne Storm to win a game that very few had given them a chance to do. The crowd was pro Roosters so we all had the best time watching the game unfold.

We had around 40 people down to spend time at the Moonlight Hall over the week.

Having the ability to offer up a place for the whole of Community to come together and socialise is a great way for a community to get to know each other while interacting in a social setting.

The atmosphere was electric on all occasions as the crowd had gathered for a common reason, to yell and chant for their team, there were no losers on the day regardless of the result as friendly banter was shared along with laughter, and yarning throughout all events.

Opening the doors of the Moonlight Hall is a very positive way to bring Community members, visitors, contractors, NAHS staff, miners and Shire workers together, this can only be a good thing for Wiluna as we all get to know each other on a different level.



Shire of Wiluna

5th October 2018—The Greatest Showman

10.00am to 12.30pm

Hugh Jackman leads an all-star cast in this bold and original musical filled with infectious show stopping performances that will bring you to your feet time and time again. Inspired by the story of P.T. Barnum (Jackman), the film follows the visionary who rose from nothing to create a mesmerizing spectacle.

This inspirational film also stars Zac Efron, Michelle Williams, Rebecca Ferguson & Zendaya.

Rated PG—Thematic elements including a brawl

12th October 2018 — Rex

2.30pm to 4.30pm

The true life story of Megan Leavey, a young Marine Corporal whose unique discipline and bond with a military combat dog saved many lives during her deployment in Iraq

Rated M — Infrequent Course Language

CHILDREN SEVEN AND UNDER WILL NEED TO BRING A PARENT WHEN WE ARE SHOWING

G AND PG RATED MOVIES.

THERE WILL BE NO EXCEPTIONS DON'T SEND THE BABIES DOWN UNLESS YOU COME WITH THEM, THE LAST THING WE WANT IS TO UPSET THE LITTLE ONES BY TURNING THEM AWAY AT THE DOOR.

Tamihana: Rec & Leisure Centre Coordinator



KATE MARA RAMON RODRIGUEZ TOM FELTON BRADLEY WHITFORD WITH COMMON AND EDIE FALCO

REX

THE TRUE STORY
OF A MARINE'S
BEST FRIEND



MENTAL HEALTH STARTS WHERE WE LIVE, LEARN, WORK & PLAY

The poster features a vibrant orange background with stylized white clouds. A large, stylized wave in white and blue dominates the lower half. Within the wave are four circular icons: a graduation cap, a play button, a house, and three interlocking gears. A large blue circle on the right contains the text 'WA MENTAL HEALTH WEEK' and the dates '7-14 October 2018'. The bottom of the poster is a solid blue band containing the website, social media handles, and logos for the Government of Western Australia and the WAAMH Commission.

**WA
MENTAL
HEALTH
WEEK**

7-14 October 2018

www.mhw.waamh.org.au



Government of Western Australia
Mental Health Commission



#mentalhealthstartshere  @MentalHealthWeekWA  @MentalHealthWeekWA

The Night Parrot

The Night Parrot is a small parrot and it is well known as being one of the most elusive and mysterious birds in the world, with no confirmed sightings of the bird between 1912 and 1979, leading to speculation that it was extinct. Sightings since 1979 have been extremely rare and the bird's population size unknown, though based on the paucity of records it is thought to number between 50 and 249 mature individuals. There have been sightings in Western Queensland in 2016, Western Australia and South Australia in 2017.

Despite the recent discoveries, the Night Parrot remains one of the rarest, least studied and most enigmatic parrots in the world. The Night Parrot is considered Critically Endangered in Western Australia, although nationally it was considered endangered. World wide Museum collections only house approximately 25 specimens of the Night Parrot. The Night Parrot has been sighted at Lorna Glen Station which was acquired by the Western Australian Department of Parks and Wildlife (formerly the Department of Environment and Conservation) in 2000 with the objective of restoring the natural ecosystem by controlling introduced predators, introduced herbivores, introducing ecologically appropriate fire regimes and re-introducing native mammals to the area. Lorna Glen shares boundaries with Wongawol, Yelma, Millrose and Granite Peak pastoral leases as well as a small area of unallocated Crown land between Matuwa and Kurrara Kurrara.



Figure 1. Main access road to Matuwa (Lorna Glen), Western Australia, where a Night Parrot was sighted in 2009. Photo: Neil A. Hamilton

Nora and Rex Ward on neighboring Millrose Station had two unconfirmed sightings of the Night Parrot, in June and early July 2009. The first of these sightings was about 50 km from Matuwa, near Lignum Bore, where Norma disturbed a bird whilst she was mustering cattle amongst very old spinifex and Mulga trees in and around a lake system. As the bird flew slowly beside her vehicle, she noted its fat body, short tail big head and darkish markings.



Figure 2. View of the lake system from the road where the Night Parrot sightings occurred, Matuwa, Western Australia, 2009. Photo: Neil A. Hamilton

New Shire Administration Building Facilities for Hire

Did you know that the Moonlight Hall, Kitchen & Dining Room can be hired? We also have 4 "Hot Office" spaces available for hire.

Hot Offices



Fees & Charges

First Day \$55

2nd to 5th Day per day \$13.75

6th Day or more per day \$22

Please contact Shire staff for more details and availability.

(Prices inclusive of GST)

(The Shire Administration is a smoke free environment)

Kitchen & Dining Room



Fees & Charges

Hire Period 1-4 hrs (day time only)

Community Groups (no alcohol) \$11
 Schools/Govt Org or Depts (no alcohol) \$22
 Corporate/Private function (no alcohol) \$27.50
 Any of the above but WITH alcohol \$60.50

Hire period 4-8 hours (day time only)

Community Groups (no alcohol) \$27.50
 Schools/Govt Org or Depts (no alcohol) \$44
 Corporate/Private functions (no alcohol) \$55
 Any of the above but WITH alcohol \$82.50

Hire period 24 hrs and/or Night Time functions

Community Groups (no alcohol) \$44
 Schools/Govt Org or Depts (no alcohol) \$60.50
 Corporate/Private functions (no alcohol) \$77
 Any of the above but WITH alcohol \$110

Above prices are inclusive of GST

Bond for all hire periods and hire types

No alcohol \$200
 With alcohol (low risk events) \$500
 With alcohol (high risk events) \$1,000

Bonds are GST exempt
 CEO to determine the risk level

(This is a smoke free environment)

Moonlight Hall



Fees & Charges

Hire Period 1-4 hrs (day time only)

Community Groups (no alcohol) \$22
Schools/Govt Org or Depts (no alcohol) \$44
Corporate/Private function (no alcohol) \$55
Any of the above but WITH alcohol \$115.50

Hire period 4-8 hours (day time only)

Community Groups (no alcohol) \$55
Schools/Govt Org or Depts (no alcohol) \$82.50
Corporate/Private functions (no alcohol) \$110
Any of the above but WITH alcohol \$165

Hire period 24 hrs and/or Night Time functions

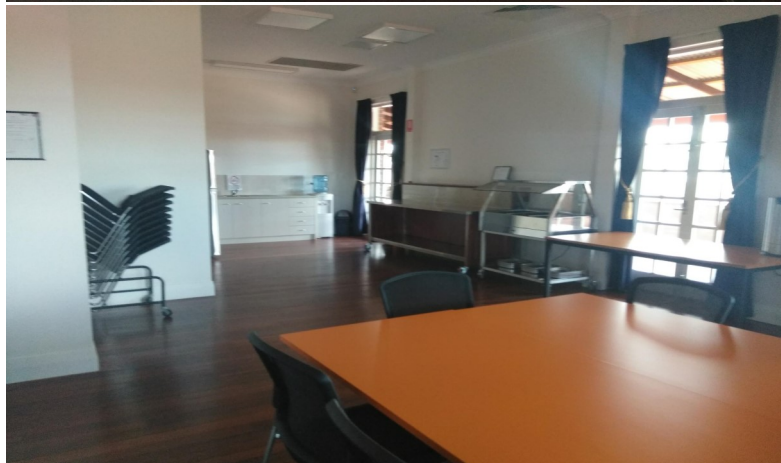
Community Groups (no alcohol) \$82.50
Schools/Govt Org or Depts (no alcohol) \$121
Corporate/Private functions (no alcohol) \$154
Any of the above but WITH alcohol \$220

Above prices are inclusive of GST

Bond for all hire periods and hire types

No alcohol \$300
With alcohol (low risk events) \$500
With alcohol (high risk events) \$2,000
(This is a smoke free environment)

Bonds are GST exempt



Enterprise Centre—Hot Shops



Hot Shop Available in Wiluna

The Shire has set aside one of the buildings at the Enterprise Centre (where Wirrpanda Foundation is located) to be used as a temporary (hot) shop. The reason for this is to encourage businesses to come or be started in Wiluna, even if this is for a short time such as a day or two. For further information on how to hire the hot office, please contact the Shire on (08) 9981 8000.

(This is a smoke free environment)

Dog Registrations Due 1 Nov 2018

Register your cat or dog

Dog Registration

- Dogs aged 3 months and over must be registered and microchipped
- Proof of sterilization is required to be submitted with your application form
- Households are limited to 2 dogs

Cat Registration

- Cats 6 months and over must be registered
- Cats must be microchipped and sterilized

Registration Period and Renewals

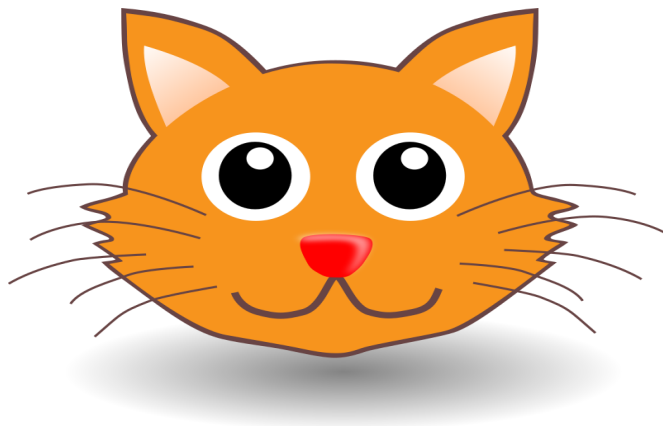
- The registration period is from 1 November 2018 to 31 October 2019
- 1 year and 3 year animal registrations expire 31 October regardless of the month your animal is registered. (Any 1 year new annual registrations purchased from the 1 June to 31 October, the fee payable is half the normal price as the registration will expire on the 31 October of that same year).

Fees Payable

Pensioner concession of 50% applies to holders of a current Pension Concession card or either a Centrelink or Department of Veteran Affairs "Commonwealth Seniors Health Card" together with a Seniors Card must be provided to claim concession.

| CATS | 1 year | 3 years | Lifetime |
|------------|--------|---------|----------|
| Sterilised | \$20 | \$42.50 | \$100 |

| DOGS | 1 year | 3 years | Lifetime |
|--------------|--------|---------|----------|
| Unsterilised | \$50 | \$120 | \$250 |
| Sterilised | \$20 | \$42.50 | \$100 |



COUNCIL NOTICE **SPECIAL COUNCIL MEETING**

**A SPECIAL COUNCIL MEETING WILL BE
HELD ON
WEDNESDAY, 17 OCTOBER 2018
COMMENCING AT 10 AM**

to consider awarding a tender for
parcel 3 of the flood damage.

| DAY | DATE | TIME | VENUE |
|-----------|-----------------|------|----------------------------------------------------|
| Wednesday | 17 October 2018 | 10am | O'Shaughnessy Council Chambers Wotton Street |

Colin Bastow
Chief Executive Officer

**A REPORT ON THE WILUNA LEG OF THE 'GRAVEL ROAD' TOUR
OF THE WESTERN DESERTS BY PITJINTJARA BAND THE
DESERT STARS, AND NSW BAND THE RE-MAINS**

**by Mick Daley, tour organiser and frontman for The Re-Mains
28/9/2018**

As part of the 'Gravel Roads' tour of the West Australian desert country, Pitjintjara band The Desert Stars from Tjuntjuntjara community and NSW band The Re-Mains played Wiluna Shire Council Rec Centre on Tuesday, September 18, 2018.

As the booker for that part of the tour, I dealt with Rec Officer Tamihana Cummings. Both prior to and during the show. Tamihana had been an enthusiastic supporter and excellent communicator in our phone and email dealings as we put the Wiluna leg of the tour together. When our touring party arrived in Wiluna, Tamihana was away on important personal business, but had asked Shire employee Tevita to assist us to settle into our accommodation, feed us and ensure everything was in readiness for the show.

Tamihana's partner Linaire Hodge personally took over after Tevita's working day was over and she did everything in her power to ensure we were comfortable, well fed and happy, even going so far as to wash our desert-soiled laundry. Tamihana had superbly promoted the show as a grog-free community event and it was a huge success. I believe most of the local community turned out and thoroughly enjoyed the performances by my band the Re-Mains and headliners the Desert Stars.

After the show Linaire continued her extraordinary hospitality, even showing up next morning to cook us breakfast. After a gruelling two weeks on the road this was a most welcome diversion. Tamihana himself arrived back that morning and we were able to have a terrific conversation about his work in the community and future plans there. Both Tamihana and Linaire are extraordinary people and great advocates for their communities and line of work.

On behalf of the Re-Mains and the Desert Stars I'd like to thank Tamihana, Linaire, Tevita and Wiluna Shire Council, particularly Jim Quadrio, who I'd first spoken to by phone, for their part in assisting a highly successful tour.

Mick Daley
mickdaley@gmail.com
0490135112

Minister shirks responsibility for volunteer retention

The Nationals have accused the Minister for Volunteering of abdicating his responsibilities after he failed to answer a question relating to volunteer retention in Parliament.

The Nationals WA spokesperson for volunteering Peter Rundle said recent media reports had highlighted the struggle many regional emergency service organisations face in retaining volunteers.

"Research has found that regional WA is hemorrhaging more than 10 emergency services volunteers every day, with a particularly high attrition rate from the State Emergency Service," Mr Rundle said.

"Given this alarming rate of volunteer turnover, it's only right that the Minister for Volunteering outlines how he plans to address the issue so that those regional emergency services organisations which rely on their volunteers have some security."

Mr Rundle said the Minister for Volunteering had shirked responsibility for the matter, claiming he was not the correct Minister to respond to the question.

"It's a massive let-down for those regional volunteers and organisations who are scrambling for support and guidance to find their own Minister does not consider issues like volunteer retention to be within his purview," he said.

Mr Rundle queried whether the State Government's new Volunteering Community Reference Group had been tasked with investigating the issue of volunteer burnout.

"In February this year the McGowan-Labor Government announced a dedicated reference group to support the volunteering sector," he said.

"This group was tasked with looking into issues surrounding volunteering and is comprised of a number of experienced individuals and organisations from the volunteering sector.

"Given that earlier this year the State Government was trumpeting the value of this new group, it seems strange the Minister for Volunteering was not able to answer a question around whether or not the high attrition rate was being considered by the reference group."

Mr Rundle called on the Volunteering Community Reference Group to outline their recommendations to minimise volunteer attrition, particularly with regards to regional State Emergency Services.

"It's vital for the sustainability of these regional emergency services organisations that the Minister seek to fast-track these recommendations and provide some assistance and to the volunteers he is supposed to represent," he said.



peter.rundle@mp.wa.gov.au

www.peterrundle.com.au

Spokesperson for Education and Training, Sport and Recreation, Seniors and Aging, Citizenship and Multicultural Interests, Volunteering

THE NATIONALS *for Regional WA*



Dear Wiluna Residents

Blackham is excited to announce the recommencement of open pit mining activities in the old Wiluna Mine Area approximately 3.5 km from the Wiluna townsite and Bondini Community.

For open pit mining operations, blasting activities form a routine part of the total mining activities.

We do not expect Wiluna residents to be exposed to any hazards as a result of these blasting activities. Wiluna residents may notice some noise from these events, depending on the prevailing weather conditions.

Please be advised that the first blast will occur at 14:00 hrs on the 9th September with subsequent blasts on a regular basis. The nominal blasting time is expected to be 14:00 hrs on those days on which blasting will occur. This may be subject to change due to site operational and weather conditions.

Prior to a blast the mine site entrance "blast notice boards" will be updated with time/ date of blast as well as blast guards positioned to prevent unauthorised personnel accidentally entering the blasting area. From the Wiluna town and Bondini community residents may potentially also hear the blast guard siren which is sounded 15 minutes prior to a blast as a notification.

Blasting will be carried out in accordance with Federal and State legislative requirements as per the "Mines Safety and Inspection Act 1994 and Regulations 1995".

All blasts are planned and designed to achieve the required outcome with minimal impact to the surrounding environment. If you require further information please contact the Registered Manager or Quarry Manager on 08 6166 9490.

Sincerely

Jon Pluckhahn

Matilda Gold Operations



Office address:
Level 3
1 Altona Street
West Perth WA 6005

Postal address:
PO Box 1412
West Perth
WA 6872

Tel: + 61 8 9322 6418
Fax: + 61 8 9322 6398

www.blackhamresources.com
ABN 18 119 887 606



Multiple Job Opportunities

General Hand – Works Crew

The Shire of Wiluna Works Department is seeking an experienced general hand to perform general duties for horticulture, street repairs, fence repairs, signage installation, irrigation repairs, minor plant servicing, general grounds maintenance and litter control. The position would suit a self-motivated individual who is available to work weekends and after hours with strong team work ethics and a commitment and desire to contribute and participate to the local community positively.

For further enquiries or to obtain a position description please contact Angela Hoy – Executive Manager Technical Services at the Shire of Wiluna on 0429817010. To apply, provide a covering letter and a resume including contact details for two current referees to emts@wiluna.wa.gov.au

Recreation Officer – Part-time

The Shire of Wiluna Recreation Section is seeking to employ an active and community-oriented person to assist in the conduct of recreational activities, and to help our Recreation and Leisure Coordinator to build upon recent achievements to take the Shire's support of recreation and community events to the next level.

For further enquiries or to obtain a position description please contact Warren Olsen – Deputy CEO at the Shire of Wiluna on 9981 8000. To apply, provide a covering letter and a resume including contact details for two current referees to dceo@wiluna.wa.gov.au

The following positions are for online applications only:

Senior Finance Officer (Revenue): The objective of this position is to manage the Shire's rates and sundry debtors systems, ensure that invoices/rates notices are promptly sent, payments are properly received, and prompt action is taken to collect overdue debts. Naturally, many reconciliations (including bank reconciliations) are part of the job. Apply for this position at <https://applynow.net.au/jobs/103546-senior-finance-officer-revenue>

Community Service Officer to work in our Art Centre/Discovery Centre/Tourist Information Centre and to assist with community events. Two positions are available – they will suit customer-focussed sales-oriented applicants with experience in art centres, visitor centres, or similar. Apply at <https://applynow.net.au/jobs/103547-community-service-officer>

Works Supervisor: Lead, coach, develop and performance manage a multi-disciplined team of staff and volunteers to oversee and assist with the construction and maintenance schedules and plans of all capital and operational infrastructure networks throughout the Shire, including but not limited to roads, pavements, drainage, culverts, airport, waste management, parks and gardens. Apply at <https://applynow.net.au/jobs/103548-works-supervisor>

Maintenance Officer – Reticulation: Keep the water flowing to keep our lawns, gardens and trees alive! Maintain/refurbish existing reticulation systems. Program and carry out the installation of new reticulation systems, planting, and other horticulture (trimming of trees). Apply at <https://applynow.net.au/jobs/103549-water-reticulation-maintenance-officer>

Receptionist to join our finance and administration team. Greet and sign visitors into our new administration centre, receipt over-the-counter payments, act as telephonist and as library officer, correctly handle all inwards calls and route inwards correspondence, assist in registering documents in our EDMRS, book appointments, arrange and prepare for meetings. Apply at <https://applynow.net.au/jobs/103550-receptionist>

The Shire of Wiluna is an equal employment opportunity employer and has a disability-accessible workplace

Applications will close at 4.30pm WST on Friday 12 October 2018

| Route: Perth (PER)- Mount Magnet (MMG)- Meekatharra (MKR)-Wiluna (WUN)- Perth (PER) | | | | | | | | | | | | | | |
|-------------------------------------------------------------------------------------|------|------|-----|------|---------|------|------|-----|------|-----------|------|------|-----|------|
| MONDAY | | | | | TUESDAY | | | | | WEDNESDAY | | | | |
| FLT | DEP | FROM | TO | ARR | FLT | DEP | FROM | TO | ARR | FLT | DEP | FROM | TO | ARR |
| HK1935 | 0735 | PER | WUN | 0935 | | | | | | HK1935 | 0735 | PER | WUN | 0920 |
| | 1005 | WUN | MKR | 1045 | | | | | | | 0950 | WUN | MKR | 1020 |
| | 1130 | MKR | MMG | 1210 | | | | | | | 1105 | MKR | MMG | 1140 |
| | 1240 | MMG | PER | 1400 | | | | | | | 1210 | MMG | PER | 1330 |
| | | | | | | | | | | | | | | |
| | | | | | | | | | | | | | | |
| THURSDAY | | | | | FRIDAY | | | | | SATURDAY | | | | |
| FLT | DEP | FROM | TO | ARR | FLT | DEP | FROM | TO | ARR | FLT | DEP | FROM | TO | ARR |
| | | | | | HK1935 | 1100 | PER | WUN | 1300 | | | | | |
| | | | | | | 1330 | WUN | MKR | 1410 | | | | | |
| | | | | | | 1455 | MKR | MMG | 1535 | | | | | |
| | | | | | | 1605 | MMG | PER | 1725 | | | | | |
| | | | | | | | | | | SUNDAY | | | | |
| | | | | | | | | | | | | | | |

Skippers Aviation is proudly WA owned and operated and committed to supporting regional WA. Skippers will continue to offer local residents a discounted fare for all regional communities within it's network.

These Fares provide substantial discounts from the standard fare, but come subject to conditions:

- Locals must provide proof of residency
- Bookings must be made at least 60 days in advance of the travel dates
- Fares are NON-refundable
- No destination changes are permitted
- Name changes are not permitted
- No itinerary changes are permitted
- Fare is forfeited if the passenger fails to complete check in before the flight closure time (ie 30minutes prior to the scheduled departure time)
- Children, Infants and unaccompanied minors Children between 2 and 12 years old need to be booked as a child

As with all fares, bookings are subject to seat availability on the desired flight (s)

Skippers advises that these fares must be booked with "Central Reservations" on 1300 729 924 or Email: reservations@skippers.com.au.

If these fares don't suit (many of us don't have a 60 day planning horizon), try calling Jacki on 0438 565 065 to see what kind of deal you can get.....



Weekly Netball is now on every

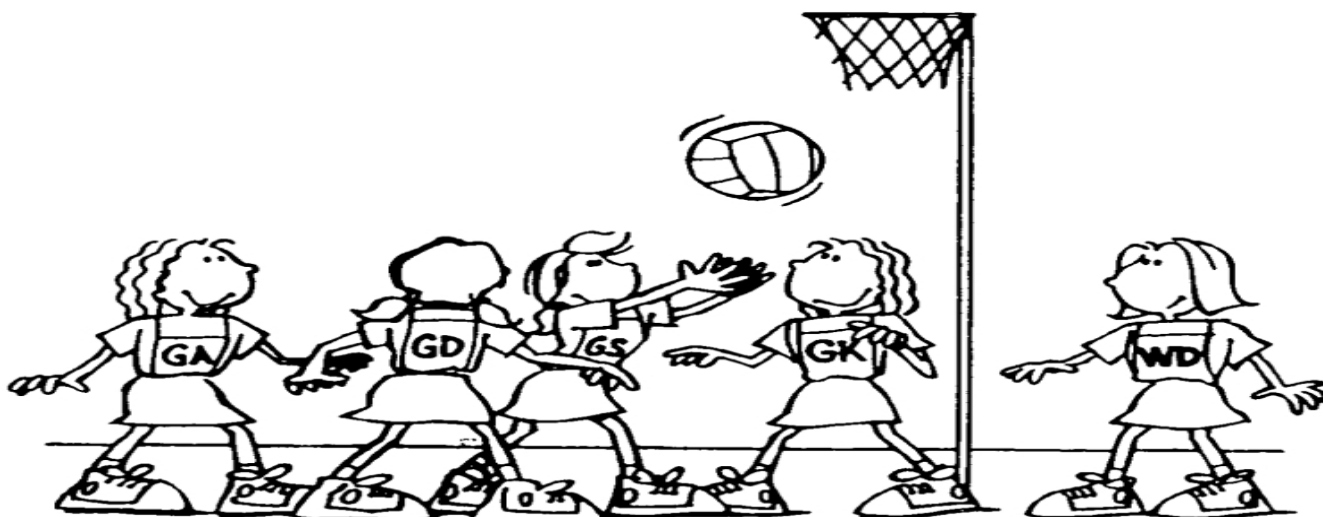
Thursday at the netball courts next to the

Recreation Centre.

Starting time is 5.30pm

Players, Spectators and Umpires

Everyone is Welcome so come on down and have a
look



Beef Stir-Fry



Ingredients

500 grams of Stir-fry beef strips
2.3 cup of BBQ sauce
1 clove of garlic (grated)
4 long fresh spring onions chopped
2 tablespoons (40ml) oil preferably sesame oil

Instructions

1. In a bowl marinate the beef in the BBQ sauce and garlic for at least 30 mins.
2. Heat some of the oil in a wok or large frying pan over a high heat.
3. Stir-fry the beef in batches for 1 minute, turning once.
4. Trim the spring onions and cut into thin lengthwise strips.
5. Quickly stir-fry in wok
6. Serve meat on top of a salad (even just shredded ice-berg is nice) and top with spring onions and drizzle with pan juices.

Lavenia's Coconut Cake



Ingredients

- 1 Cup of Coconut
- 1 Cup of Milk (coconut or almond is ok)
- 1 Cup of Caster Sugar
- 1 Cup of Self-Raising Flour

Method

- ◆ Place all the ingredients in a bowl and mix.
- ◆ Line a loaf tin with baking paper or spray with oil
- ◆ Then pour mixture into the tin.
- ◆ Bake in a preheated 180C oven for 40 minutes.

Lemon Icing

- 3 tbs icing sugar
- 1 tbs butter
- Juice of 1/2 lemon

Mix all ingredients together, if the mixture is too runny, mix in a little more icing sugar.

Sudoku



Oktoberfest Word Search



DIRECTIONS: Find and circle the vocabulary words in the grid.
Look for them in all directions including backwards and diagonally.



ACCORDION
AUTUMN
BAVARIA
BEER
BIERGARTEN
BRASS BAND
BRATWURST
CAROUSEL

COSTUME
DANCING
DIRNDL
DUMPLINGS
GERMANY
KEG
LEDERHOSEN
MUNICH

OKTOBERFEST
POLKA
PRETZELS
RADISH
SAUERKRAUT
SINGING
TANKER
TENT



Inspiration

The most wasted
of all days
is the one
without
Laughter
-E.E.Cummings

**LIFE IS
BETTER
WHEN
YOU'RE
LAUGHING**

IF YOU
LAUGH
A LOT,
WHEN YOU GET OLDER
YOUR WRINKLES WILL BE
IN THE RIGHT PLACES.

"It's hard to be brave
when you're only a
very small animal!"
AAMine,
Winnie the Pooh



Sometimes you need to look
at life from a different
perspective



SO I BECAME A PANDA



CAN YOU RUB MY BELLY?



TEAMWORK

Coming together is a beginning... Keeping together is progress... Working together is a success.

Oktoberfest

Word Search

SOLUTION

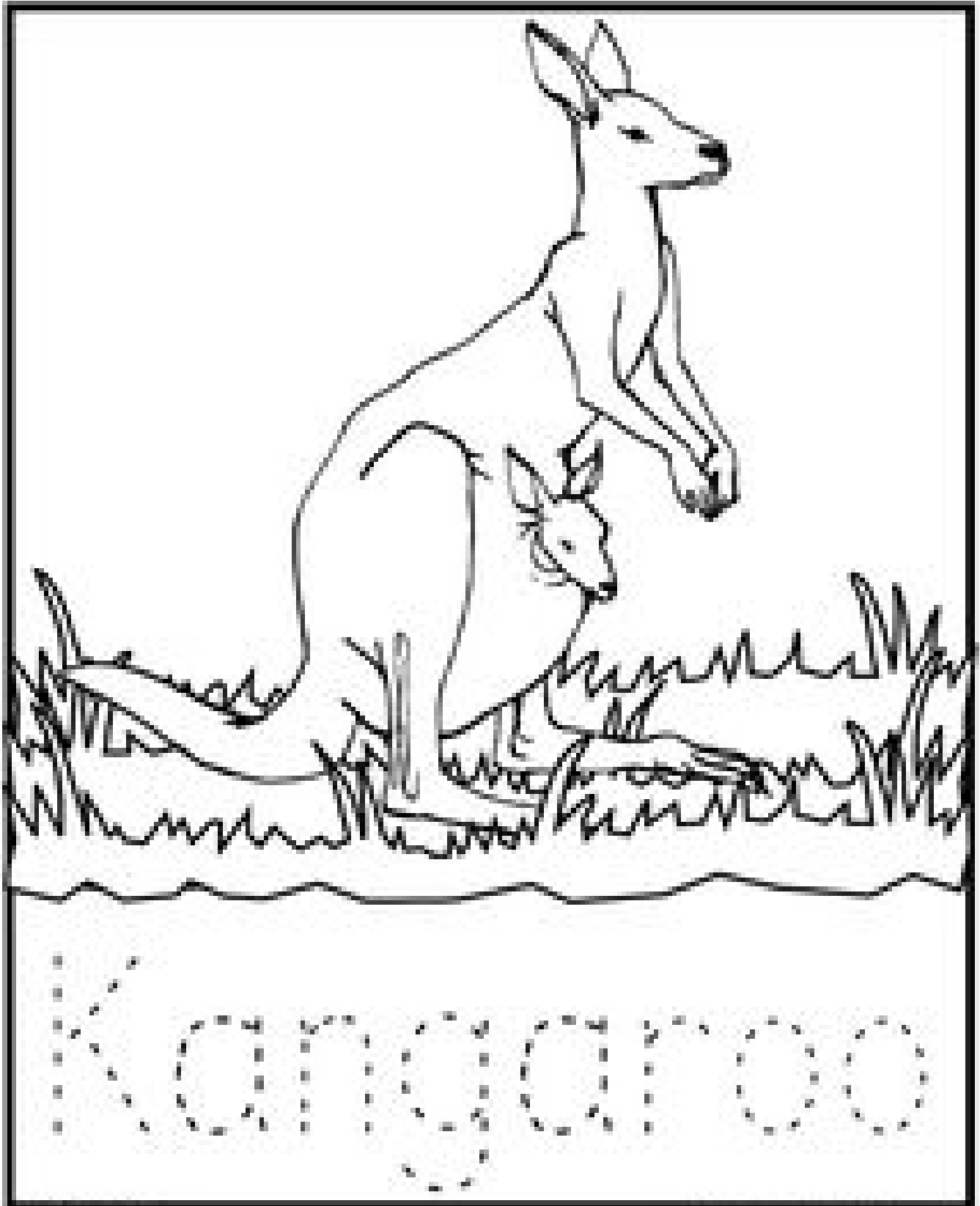
DSDJXUYFOSGVNXKPGMS
HHTZXYNETRACREIBEXU
EMYDRPYFTNBLNMHMW
NMUTUAOHNUWDRIYQMI
BRHDTLSLSBWANDAGHGR
LRYPSIGIQWRRETFE
EWAUOZFDYWUKGRKIAT
DKGSRRGAFMHDRKTNZ
EWNISFEBOTKLDZDE
RIOCBEMUTSOXNUEFL
HYIOHFAKASRYMIOCATS
OHDIHVBNGIZECMJMCS
SQRVJCONOWENVRAYEBB
EUOUWHZBNALLESUORAC
NVCGLINNAOQPOLKAVB
UWCDPFGJUGDVZSRXPAF
DKAMXREEBMGERMANYRX
WUPNWOQRIVADYVJSUIZ
DDBRATWURSTONUENNAI

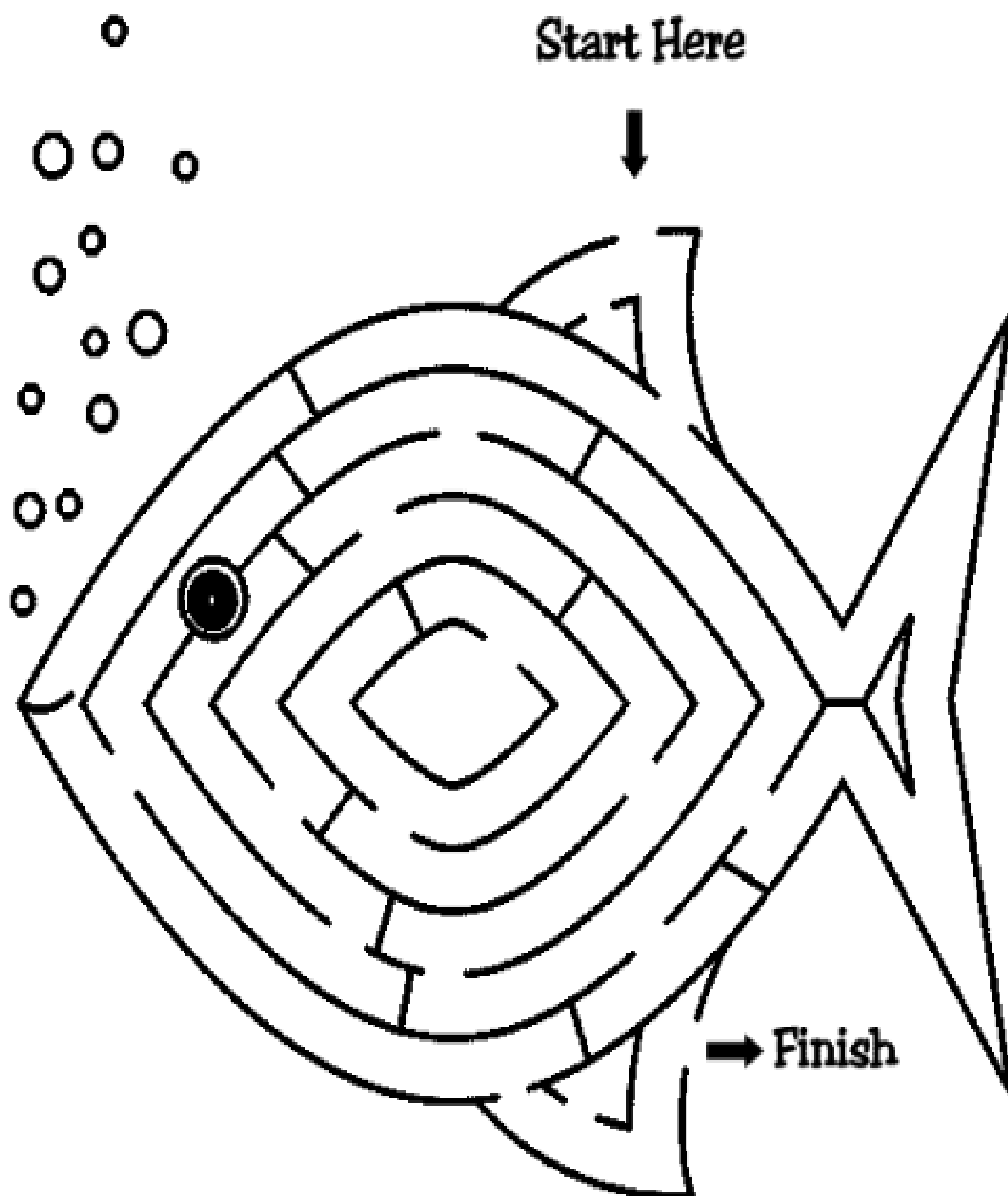


COURAGE

Do one brave thing today... then run like hell.

Trace and Colour





Colour By Numbers



Aussie Lingo Test

Can You Speak Australian Slang?

M
A
T
C
H

T
H
E

W
O
R
D
S

- 1.) G'day
- 2.) Mate
- 3.) Dinkum
- 4.) Ocker
- 5.) Yonks
- 6.) Noggin
- 7.) Drongo
- 8.) Furphy
- 9.) Chinwag
- 10.) Barbie
- 11.) Gander
- 12.) Digger
- 13.) Nuddy
- 14.) Bloke
- 15.) Arvo
- 16.) Sheila
- 17.) Togs
- 18.) Iffy
- 19.) Bonzer
- 20.) Hooroo

- | | |
|--------------------------|--------------------|
| <input type="checkbox"/> | A.) A Silly Person |
| <input type="checkbox"/> | B.) Barbeque |
| <input type="checkbox"/> | C.) Excellent |
| <input type="checkbox"/> | D.) Aussie Soldier |
| <input type="checkbox"/> | E.) A Talk |
| <input type="checkbox"/> | F.) Swimwear |
| <input type="checkbox"/> | G.) Afternoon |
| <input type="checkbox"/> | H.) Rumour |
| <input type="checkbox"/> | I.) Goodbye |
| <input type="checkbox"/> | J.) A Long Time |
| <input type="checkbox"/> | K.) Suspicious |
| <input type="checkbox"/> | L.) Have A Look |
| <input type="checkbox"/> | M.) A Real Aussie |
| <input type="checkbox"/> | N.) Woman |
| <input type="checkbox"/> | O.) Head |
| <input type="checkbox"/> | P.) Nude |
| <input type="checkbox"/> | Q.) Hello |
| <input type="checkbox"/> | R.) Man |
| <input type="checkbox"/> | S.) Friend |
| <input type="checkbox"/> | T.) True |

M
A
T
C
H

T
H
E

W
O
R
D
S





Wiluna Buy and Sell

Do you have anything you want to buy or sell?
You can advertise here for free.
Forget Gumtree and Ebay, and all those freight charges.
One mans' trash is another mans' treasure.
Let's keep it local and we all benefit.



If you would like to advertise something please email the Shire on aa@wiluna.wa.gov.au with Wiluna Buy & Sell in the subject line. Please include a picture if you can and a detailed description. Please include your contact details.