

# MARCH 2019 NEWSLETTER

Published 07/03/2019

## *The Wiluna Wire*







## EVERYONE IS WELCOME!

Hello and welcome to the March edition of the **Wiluna Wire**. In this edition we have submissions from a number of Wiluna agencies and individuals. We would love to make the **Wiluna Wire** into an informative, interesting and entertaining newsletter, that includes submissions from all sections and ages of the Wiluna community. The newsletter will only be as good as the submissions we receive!

If you have any feedback, suggestions and or submissions, please come into the Shire Administration Centre on Wotton Street and have a chat. Contact can also be made by phone—9981 8000 or email at—[aa@wiluna.wa.gov.au](mailto:aa@wiluna.wa.gov.au) with “The Wiluna Wire” in the subject line.

Regards

The Administration Team

THE CANNING-GUNBARREL DISCOVERY  
CENTRE IS NOW CLOSED TO THE PUBLIC  
AS OF THE 1ST OCTOBER 2018.  
HOWEVER IF YOU WISH TO VISIT, PLEASE  
MAKE AN APPOINTMENT FOR A PRIVATE  
VIEWING.

TJUKURBA ART CENTRE REMAINS OPEN  
TO THE PUBLIC AND ARTIST'S OVER THIS  
PERIOD



## **ORDINARY COUNCIL MEETING**

### **DATES 2019**

<b>Date</b>	<b>Venue</b>	<b>Starting Time</b>
27 February 2019	O'Shaughnessy Council Chambers	9am
27 March 2019	O'Shaughnessy Council Chambers	9am
24 April 2019	O'Shaughnessy Council Chambers	9am
22 May 2019	O'Shaughnessy Council Chambers	9am
26 June 2019	O'Shaughnessy Council Chambers	9am
24 July 2019	O'Shaughnessy Council Chambers	9am
28 August 2019	O'Shaughnessy Council Chambers	9am
25 September 2019	O'Shaughnessy Council Chambers	9am
23 October 2019	O'Shaughnessy Council Chambers	9am
27 November 2019	O'Shaughnessy Council Chambers	9am
18 December 2019	O'Shaughnessy Council Chambers	9am





## CEO's Report

The Shire is currently undertaking public advertising of the concept plans for the following projects:

- New Playground Development,
- Memorial Park Development, and
- Wiluna Shopping Centre Development.

Further information about the above projects can be found within this edition of The Wiluna Wire.

The Wiluna Shopping Centre Development is a new project that Council is considering assisting with the long term financial sustainability of a shop in Wiluna. Food security is a significant issue in Wiluna as many of the residents can shop up to three times a day. A purpose built shop will have many benefits such as reduced staff and energy costs.

The Shire had invited tenders for the long-awaited main street upgrade. Unfortunately, the Shire did not receive a suitable tender which has delayed the project. The Shire is currently investigating the possibility of staging the works over a number of years.

Council has recently adopted a business plan for the development of the Wiluna Caravan Park. The business plan will allow the Shire to seek grant opportunities to help pay for the estimated \$2.4m capital cost that this project is expected to cost.

The recent bingo night was a great success with over 20 people attending. I was lucky enough to win the first game but had stiff competition for the next nineteen games. The Shire will be holding additional bingo nights so keep an eye on the calendar of events for the next great event.

You may have noticed the recent changes to the Wiluna Public Swimming Pool operating hours? Unfortunately, due to a small group displaying bad behaviour, the Shire has been forced to restrict the facility's opening hours. As a result, the Shire will be implementing a standard of behaviour across all of its facilities which will result in anyone breaching the new standard being banned from using other Shire facilities. For example, a ban at the Swimming Pool will also result in a ban at the Wiluna Recreation Centre etc.

The Shire has just purchased four mobile CCTV cameras that the Wiluna Police will also be able to use in hot spots. The purpose of the cameras is to help reduce crime in Wiluna by allowing the Wiluna Police more resources that may help them resolve crime.

Regards

Colin Bastow

CEO

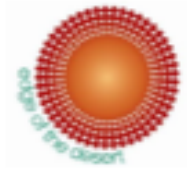


# Recreation Centre Activities for the Month

March 2019						
◀ February						April ▶
Sun	Mon	Tue	Wed	Thu	Fri	Sat
					1 Pool 2.30pm to 6.00pm	2
3	4 LABOUR DAY Public Holiday	5 POOL 2.30PM TO 6.00PM DIN 6.00 TO 7.00PM Box Fit 6-7	6 DIN 3.15 TO 5.30PM 6.00pm – 7.00pm 3 on 3 Basketball training with Ray	7 DIN 4-7PM CIRCUITS 6-7	8 OFFICE DAY Pool 2.30pm to 6.00pm	9 Box Fit 10.00am to 11.00AM
	11 DIN 3-6pm outside 6.- 7pm	12 DIN 4 – 6pm outside 6.- 7pm Box Fit 6-7	13 MOVIE MATINEE HACC 9-45 TO 12PM BLUE PLANET MOVIE ARVO: 2-45/ 4-30 The Pirates 6. – 7.00pm 3 on 3 Basketball training with Ray	14 DIN 4 – 6pm outside 6.- 7pm Box Fit 6-7	15 OFFICE DAY	16 Box Fit 10.00am to 11.00AM
17	18 DIN 3 – 6pm outside 6.- 7pm	19 DIN 4 – 6pm Outside 6.- 7pm Box Fit 6-7	20 BINGO 6-30 TO 9-30 DIN 3 – 6pm 6.00pm – 7.00pm 3 on 3 Basketball training with Ray	21 POOL 2.30PM TO 6.00PM outside 6.- 7pm Box Fit 6-7	22 OFFICE DAY Pool 2.30pm to 6.00pm	23 Box Fit 10.00am to 11.00AM
24	25 POOL 2.30PM TO 6.00PM outside 6.- 7pm	26 POOL 2.30PM TO 6.00PM outside 6.- 7pm Box Fit 6-7	27 MOVIE ARVO: 2-45/ 4-30 Monster Truck 6.00pm – 7.00pm 3 on 3 Basketball training with Ray	28 POOL 2.30PM TO 6.00PM outside 6.- 7pm Box Fit 6-7	29 POOL 2.30PM TO 6.00PM	30 Box Fit 10.00am to 11.00AM
31						



**Shire OF  
Wiluna**



# ATTENTION

Murdoch University Veterinarians are coming to Town

From the 1st to 6th April 2019.

Jodie Taylor from WA Contract Ranger Services will be here a couple of days before to help organise anyone who would like their dog sterilised for Free

Basic health checks are available.

Basic vaccination for Parvovirus and Hepatitis will offered at a cost

For more information Please contact the

Shire Office on  
9981 8000





## The Shire of Wiluna Youth Week Community

Come Join the 3 on 3 Basketball Tournament

Monday 15th April to Thursday 18th April

The tournament is open to all community members but ALL teams will need to have at least 1 Youth (aged from 10 to 18) and be gender mixed, because boys and girls can do anything.

Pre-tournament training will start on Wednesday 27th February from 6.00pm to 7.00pm, with Ray holding games and skills sessions every Wednesday until 10th April. This gives you 7 sessions before the BIG week.

Come on down and lend a hand, share your skills while engaging with your children and relatives that call Wiluna home.

Get involved by making up a family team. The idea of this program is called engagement. By being involved you show your children that they matter.

Service Providers and contract workers can form teams and we will provide the Youth.

Come on down and meet and share time with the people of Wiluna.

You can get registration forms from Tamihana at the Recreation Centre from the beginning of March until Monday 15th April. Registration Forms will also be available on Wednesday's during skill sessions from 6.00pm to 7.00pm with Ray

This program will be set up by the Wiluna Youth Group and they will be part of the tournament as well as your host.

Wiluna Youth Group ask that we all come together to support the program and have fun

Thank you to the Wiluna Police for your support with our Funding Application to Premier and Cabinet and assistance with Tournament Week.



Government of Western Australia  
Department of the Premier and Cabinet





# Wiluna Swimming Carnival 2019



Friday 8th March

Families, please join us at



Wiluna Swimming Pool,

9:00am - 2:30pm

to cheer on the kids  
& share a BBQ lunch!





# WILUNA REMOTE COMMUNITY SCHOOL



Left to Right: Miss Rosie, Miss Natasha and Mr Su.

To all who have just joined the school I would like to welcome you to the Wiluna Remote Community School and to those families who are returning for this new school year welcome back!

A warm welcome to the school team this year is Miss Natasha, Mr Su and Miss Rosie. Between the three of them they bring a wealth of knowledge and experience to the school.

There has been a lot happening at the school this term. We Started Week Two with swimming lessons with Mary and Miss Ariel. The students all worked hard to improve their swimming strokes and prepare for the Swimming Carnival coming up in Week Five. This was completed by our

Friday afternoon swim with parents and community members. With the wonderful on-going support of Matilda Operations Pty Ltd, we were able to share a bbq with family and friends. A big thank you to all the community and family members who came down to share this time with our students. We are also very fortunate at Wiluna Remote Community School to have some wonderful partnerships both in and out of our community. Week four was abuzz with fun as the NASCA team joined us for some sporting fun. Amy, Blake and Harry!

On the 19th March we will be holding our mid-term assembly and morning tea. We are very lucky to have Keith Payne VC as our special guest at this assembly; as well as some local businesses and agencies to present some of our awards. Building connections in Wiluna is very important at Wiluna Remote Community School and we hope to see as many Wiluna faces as possible on the day!

Overall a fantastic start to 2019, with attendance numbers on the rise and lots of supportive families and community members working together to enable the students to do their best.



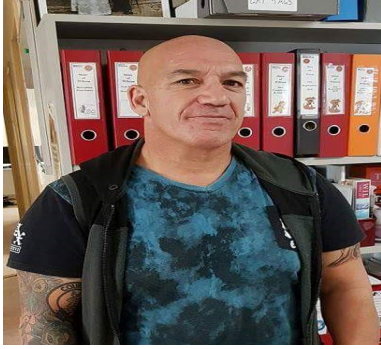


**Amy, Blake and Harry from NASCA with the staff and students from Wiluna Remote Community School.**



**Mr Adam with some of the students at our Friday fun day at the pool.**





# Recreation & Leisure Coordinator Report

A very busy month for me at the Rec Centre with in house and community based activities that involved the young the old and everyone in-between.

It was a pleasure to put on a movie and host the elders of the community from HACC at the Rec Centre. The group watched the Australian classic *The Sapphires*, it was nice to see the elders break from their normal routine to sit and relax in the big hall. We will be showing David Attenborough's *Blue Planet 2* on Wednesday 13 March starting at 9.45am, family members are welcome to join the elderly, no children as we are creating a quiet space for the senior members of our community to come relax and enjoy the company of others.

## **Moonlight Hall**

Since the opening of our new Administration building the Shire has been working towards hosting social events for all community members, I am pleased to report that we have started our social calendar off with two successful events. We all look forward to the coming months, the laughs we will have, the time we will share as the town of Wiluna and its people get into the spirit of sharing time outside of their work hours. All it really takes is for you to dust off your party gear and come on down to the MOONLIGHT HALL as it is the place where people go to see their mates and make new friends they haven't met yet.

## **Moonlight Karaoke Show**

We held our first interagency get together on Saturday 23 February, we had a total of 25 community members attend from the Remote School, NAHS, HACC and the Shire.

We had one lone ranger called Jed, you held the tradies flag high throughout the night, the song you sung was a gem, can't wait to hear you sing your second most favorite song of all time.

Doors opened at 5pm and the first hour saw the Shire staff bust out a few turns amongst themselves. Around 6pm the teachers rolled in on mass, took over the mic's and dance floor and set the scene for the rest of the night.

I got to see firsthand the music hit the people in all types of ways, from Adam the quiet guy suddenly become the man in the middle sharing his voice and dance moves with us all. To young Emele who rolled into the hall with the family, take the mic and hit the high notes we dream of hitting while Warren strutted his stuff while singing the songs of yesteryear. To everyone else that took the plunge and shared a little of themselves that night thank you, without you participating we would of all been sitting there looking at each other.

The highlight of the night had to be the CEO Colin and Joe's rendition of Meatloaf's "I won't do that". I never realized how long that song was, you two will never know how much joy and laughter you brought to the world of Wiluna with your efforts.

The overflow of the evenings socializing has seen folks, who see each other daily while going about their business saying hello to each other and yarning. From this perspective the night was a huge success, the word is out about how much fun we all had and cannot wait for the next instalment, roll on April 13th and rock the night away. Don't forget the doors open at 5pm.



## **Trash and Treasure**

We held our first trash and treasure on Sunday 24th and we had a steady stream of towns folk down to score a bargain, the going was a bit tough after the late night of singing and laughing on Saturday, however we all managed to sell some items while making some money for the RFDS, a win for the community. The next Trash and Treasure will be held May 19th, so keep an eye on next month's Wiluna Wire for details to participate or look for flyers around the community. You can always come down to the Rec Centre and yarn with me if you are interested.

## **Bingo Night**

Bingo hit the Moonlight Hall with a bang on Wednesday 27th, we had 21 town folks down to try their luck, we had good representation from all groups in the community, with service providers and locals spending the evening together. The foundations have been laid, as we learnt a lot from this first up effort with a few adjustments we should have a polished product for the community of Wiluna. Seventy percent of the takings were paid out as prizes, a small percentage goes to the Gaming Commission while the balance is donated to the RFDS. The more folks we have down the more money we can collect which means the more money we pay out and donate to the cause. The biggest issues of the night had to be Warren dropping his balls on the floor, I am pleased to say as the night grew long he managed to get his eye hand coordination in check, this saw Warren keep a firm grasp on his ball's as the odd one flew into the air. Look forward to seeing you all up at the Moonlight Hall on March 20th doors open at 6pm and games kick off at 6.45pm.

## **Recreation Centre/Pool**

Due to some of the children's behavior at the pool, Tevita and I will be stationed at the pool Monday to Friday from 2.30 until 5.50pm, Tevita will then head down to the Rec Centre so the children can access the outside courts from 6 to 7pm. With this change there will be no access to the Rec Centre after school until the end of swimming season unless notified.

The pool tables in the Rec Centre have been shut due to young people thinking it's ok to poke holes in the ceiling, I am aware that this used to be part of the way you guys did things based on the number of holes in the ceiling prior to my arrival in town. I had the ceiling fixed last year and gave the children the consequences if they thought it was ok to wreck this community asset. Thank you to the individual or young people that have lost the use of the pool tables for all of us, if you stand by and watch someone doing this and say nothing you are as much to blame as the person making the holes in the ceiling.

Adults who roll down to the centre in the afternoons are most welcome to use the tables as you guys are not part of the problem.

## **Karaoke Night Kapers**





THE SHIRE OF WILUNA PRESENTS

**BINGO**

9 13 72 1 5  
76 9 31 60 2  
28 7 15 3 11

**BINGO**

9 13 72 1 5  
76 9 31 60 29  
24 65 28 7 11

**BINGO**

9 13 72 1 5  
31 60 29  
28 7 11

76

13

24

15

11

# Bingo Night

WED, MARCH 20TH 2019

6.30PM-9.30PM

IN THE MOONLIGHT HALL

**COST: \$30 PER BOOK OR  
\$15 FOR 1/2 A BOOK IF YOU  
SHARE WITH A FRIEND**

**CALL TAMIHANA FOR MORE INFO**

**BINGO**

3 72 1 5  
31 60 29  
FREE 28 7  
10 11 3

**BINGO**

9 13 72 1  
76 9 31 6



# How to check in on someone

Helping others and providing support can make a difference for someone who is having problems and going through a tough time. If you think someone you care about isn't going so well, try the following tips on how to support them and continue to check in on them.



## Talk

For most people, just asking if they are okay and listening can make a difference.

By simply being there for someone, they can feel less alone and more supported to open up and talk about how they are really feeling.

Asking open ended questions that require a response is a good way to start the conversation.

### FOR EXAMPLE:

- How are you going? What's been happening in your life lately?
- You don't seem quite yourself lately, is something bothering you?
- You seem upset or worried, what's going on? Can I help with something?
- I've noticed you're not going out much lately, anything going on?



## Listen

Just being there for someone and offering a listening ear can make a difference.

1. Show them that you care and are here to listen to them.
2. Have patience, let others talk and don't judge.
3. Be reflective by repeating what they have said.
4. Keep calm and accept that they may disagree with you.



## Provide support

If the person you're concerned about is in a life threatening situation, or is at risk of harm to themselves or others, call 000.

Getting help early can make a difference. A good place to start is:

- Talk to your GP or someone you trust.
- Call a support line.
- Contact a support service.
- Try the Think Mental Health check-up tool.

They may also need your support while they look for professional help.



## Do an activity together

Activities create conversation. Find an opportunity during everyday life activities to start the conversation and ask them how they are really feeling. Try doing activities together such as:



GOING FOR A WALK



GOING TO AN  
EVENT TOGETHER



GOING FOR A COFFEE  
OR A MEAL



KICKING THE FOOTY,  
PLAYING A GAME,  
SURFING ETC



GOING FOR A DRIVE



ANYTHING THAT  
ENCOURAGES OR PROVIDES AN  
OPPORTUNITY TO HAVE A CHAT

  
**think**  
MENTAL HEALTH

For more information visit  
[thinkmentalhealthwa.com.au](http://thinkmentalhealthwa.com.au)



## Wiluna Shop Concept Plan

Council met on Wednesday 27 February 2019 and one of the items discussed was the concept plan for a purpose built shop in Wiluna.

Council resolved to advertise the plan for public comment for a minimum period of 14 days.

Once the community has had an opportunity to comment on the plan, an agenda report will be prepared for Council to consider approving or modifying the concept plan.

The proposed location is on the corner of Wall and Wotton Street.

If you wish to lodge a submission, please address your submission to:

CEO  
PO Box 38  
Wiluna WA 6646

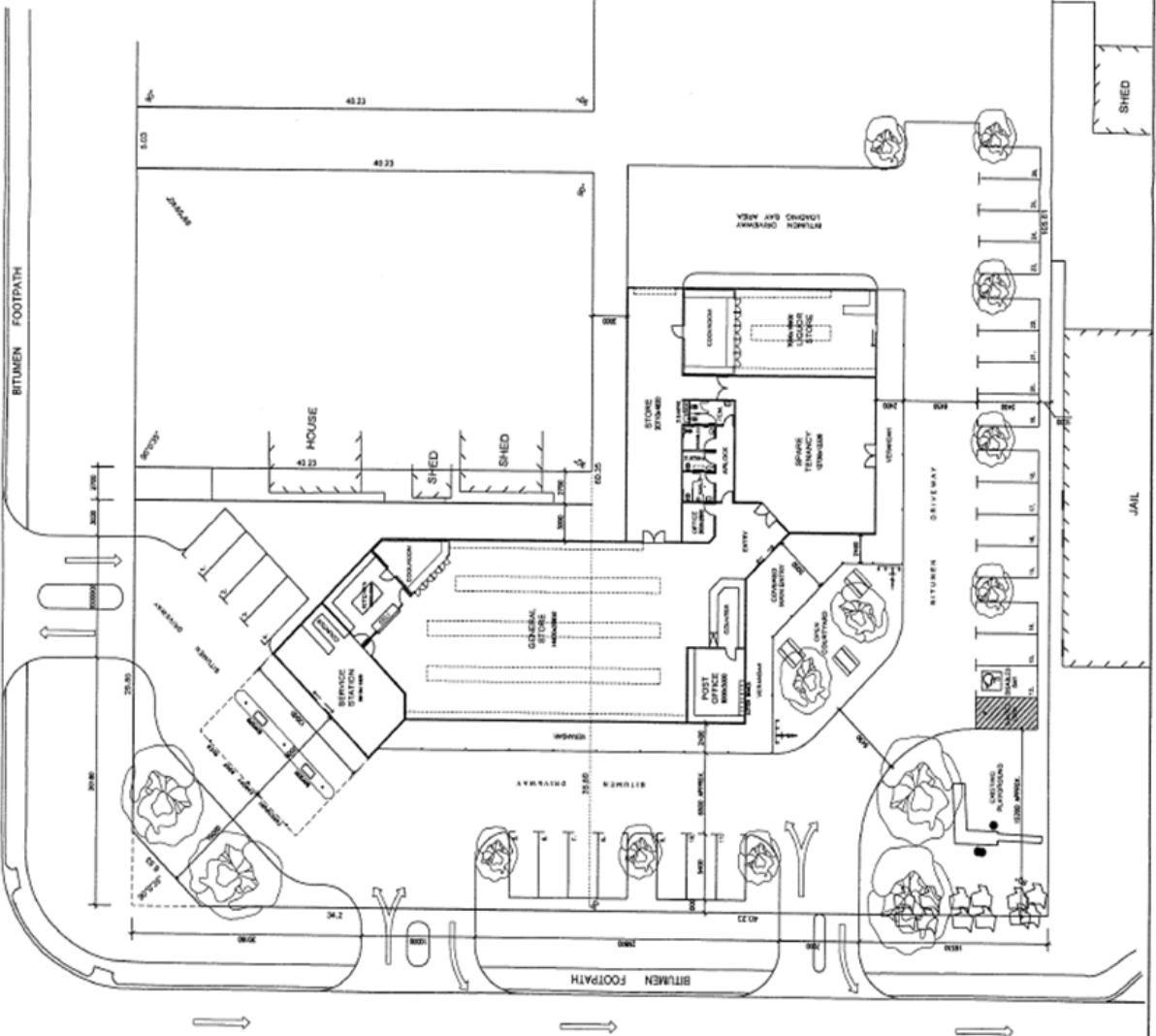
or drop it into the Shire Administration Office. The office is open between 8.45 and 4pm Monday to Friday. Submissions close on the 25 March 2019 at 4pm.

A concept plan of the shop is on the next page.





WALL STREET



LENNON STREET

WOTTON STREET

SK-2	Final Concept Sketch for Client Review	2010/09/19
SK-1	Finalised Concept Sketch	2010/09/19
REVISION	DATE	
TEAKLE & LALOR		
Address: 61/219 Franklin Drive, Gendron		
Phone: 081 5694 1802		
Email: info@teakleandl.com.au		
Website: www.teakleandl.com		
JOB		
PROPOSED COMMERCIAL DEVELOPMENT AT CNR OF WALL STREET & WOTTON STREET, WILUNA		
CLIENT		
SHIRE OF WILUNA		
DRAWING TITLE		
SITE PLAN		
Scale	1:200 @ A1	Sheet No.
Date	23/10/2019	Sheet No.
Job No.	18095	1 of 1 SK-2





Invitation to all to attend the

# MEEDAC COMMUNITY EXPO

Date: 14th March 2019

Location: Shire Function Room

From 10:00 am

MEEDAC delivers the Community Development Program on behalf of the Department of Prime Minister and Cabinet. The CDP supports Job Seekers in remote Australia to build skills, address barriers and assist them into employment. Through their participation in WFD activities, they contribute to a range of flexible activities aiming to generate positive outcomes in your community.

## Community Consultation

10.00 am to 11.00 am

MEEDAC will discuss its role as the provider, explain activities that have been created and share success stories. We will also invite your feedback to help shape current and future activities in your community.

In delivering these sessions it will open a clear line of communication between all interested parties.

## Employment Expo

11.30 am to 2.00pm

MEEDAC has been working with Employers across the Midwest to bring together an employment Expo session for our Job Seekers and community members.

(Morning tea and light lunch provided)





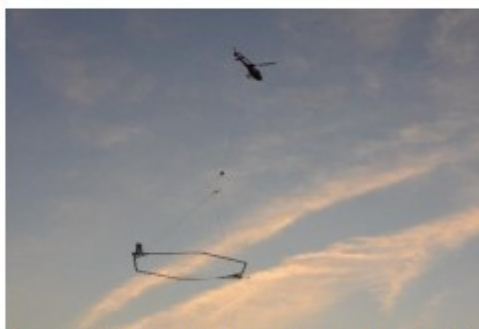
# Research Activity Notice

## Regional airborne survey

Geoscience Australia, in collaboration with Western Australia and Northern Territory Government agencies, will be carrying out a series of airborne electromagnetic (AEM) surveys across the Northern Territory and Western Australia in 2019 as part of the *Exploring for the Future* program. This program aims to gather new information about the potential ground water, mineral and energy resources concealed beneath the surface, and this information will lead to more informed resource management and to better targeted investment.

### AEM survey method

Light aircraft and helicopters can be fitted with AEM instruments to map variations in the conductivity of the ground to a depth of several hundred metres.



A light aircraft (upper photograph, courtesy of CGG Australia) and helicopter (lower photograph, courtesy of SkyTEM Australia) in action during previous AEM surveys.

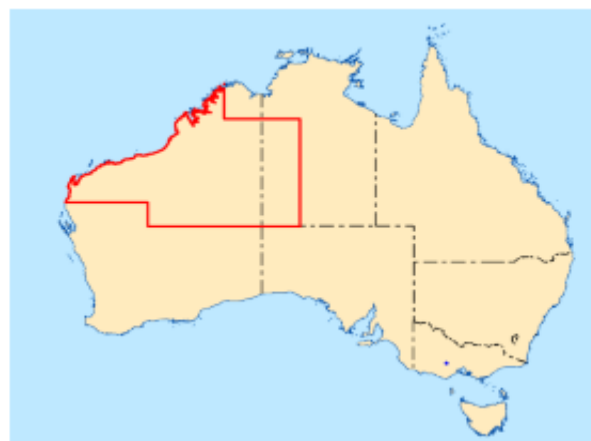
During the survey, a signal will be transmitted from the aircraft into the ground. Towed antennae can detect the returned signals and the nature of these signals will be analysed to map variations in the conductivity in the ground that are caused by saline water and certain types of minerals.

## What you may see

A helicopter or a fixed-wing aircraft that is towing equipment below it will make a single pass approximately 150 m above the ground, along straight tracks 20 km apart. If you have any concerns with this activity such as whether stock may be disrupted, please contact Geoscience Australia (details given below).

## Timeframes and work area

The airborne survey is expected to be carried out between March and November 2019, working in stages across the area outlined with a red box in the figure below. More detailed information about timing and flight lines will be released after community consultation in February/March 2019.



## Important to know

All data produced by Geoscience Australia, including the data from this survey, will be made freely available after various quality assurance checks have been performed.

This survey will not involve any disturbance to the ground.

Updates related to this activity can be found at <https://www.ga.gov.au/ausaem>

### Contact Details

Please contact us if you have any questions about these airborne survey works:



Free Call 1800 091 964 (Mon-Fri, 9am to 5pm AEST)

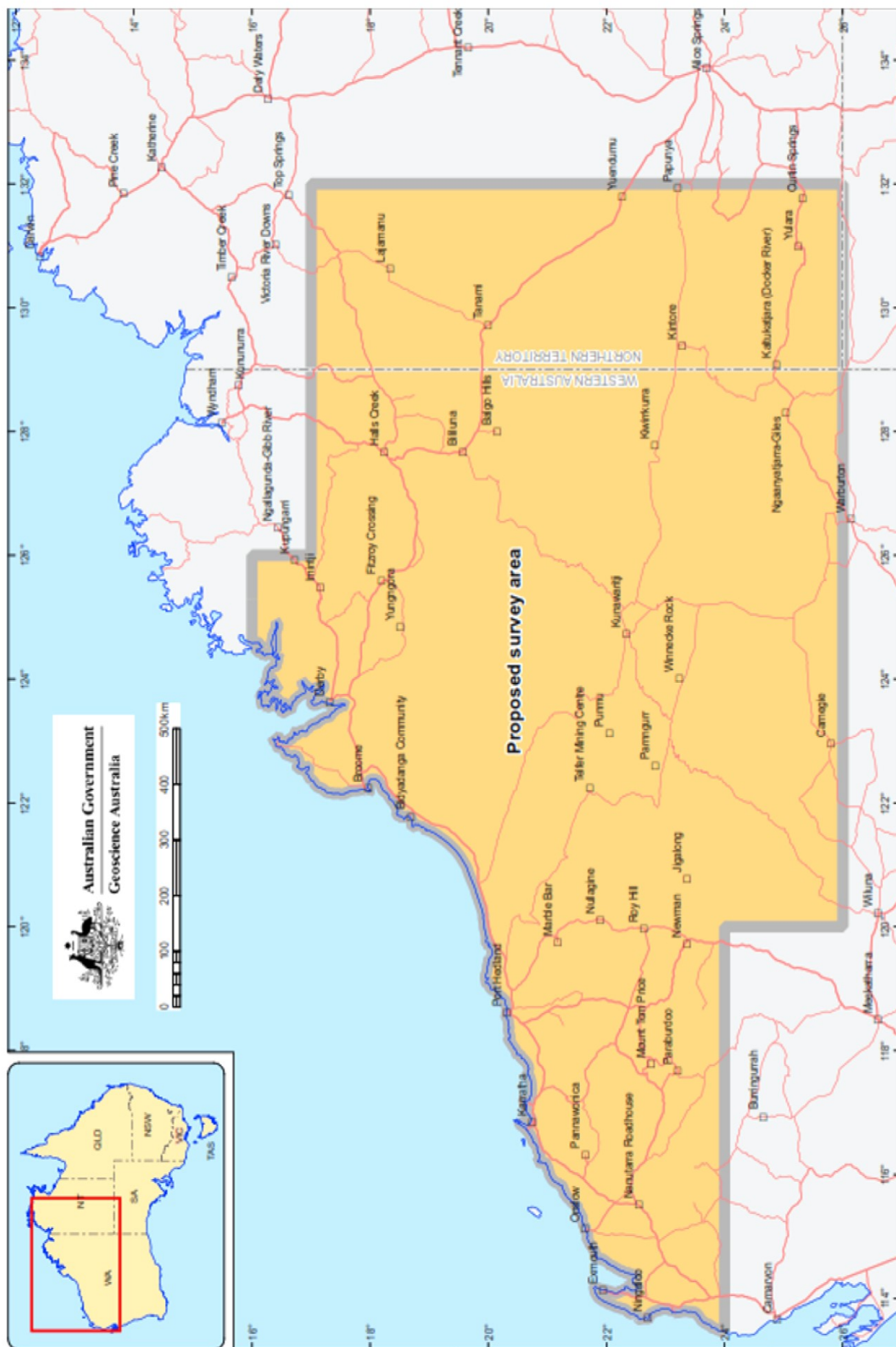


[EFTF@ga.gov.au](mailto:EFTF@ga.gov.au)



[www.ga.gov.au/efft](http://www.ga.gov.au/efft)







## Memorial Park and Playground

Council at its Ordinary Meeting on 27 February 2019 resolved to approve the CEO to advertise for public comment, the design of the Memorial Park and Playground.

The proposed memorial park will be a staged project, and most likely construction will not commence until the 19/20 financial year and will be dependent on sourced funding should be community continue to support the project.

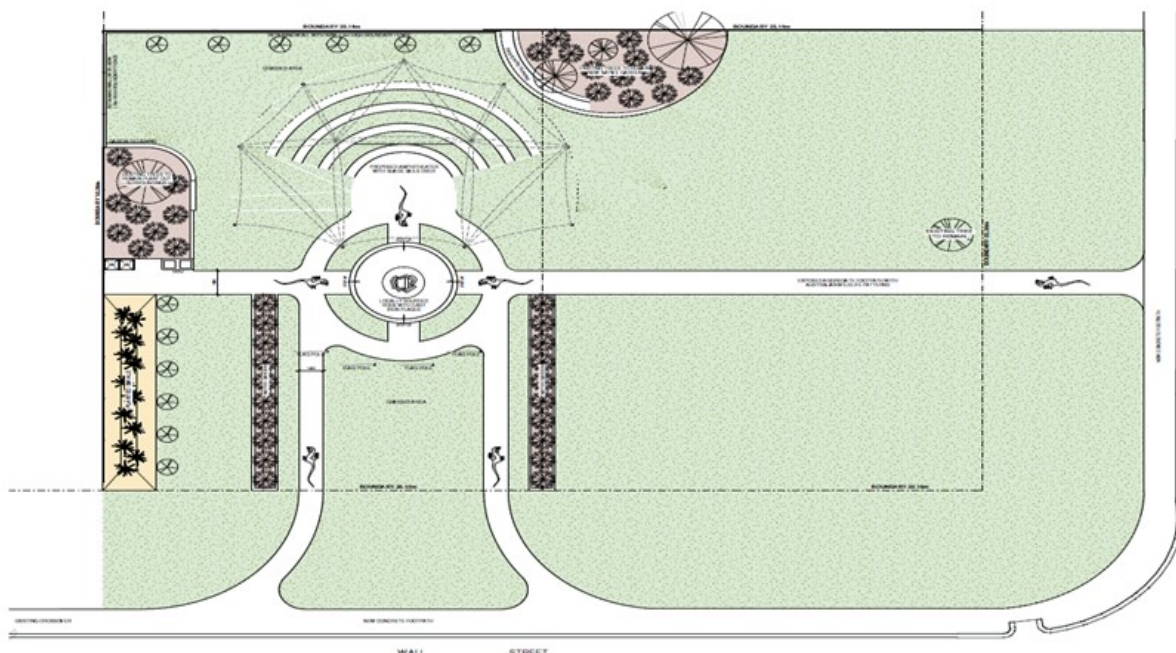
The proposed playground will also be a staged project, however initial stages should be able to be delivered by July 2019 should the community continue to support the project.

If you wish to lodge a submission, please address your submission to:

CEO  
PO Box 38  
Wiluna WA 6646

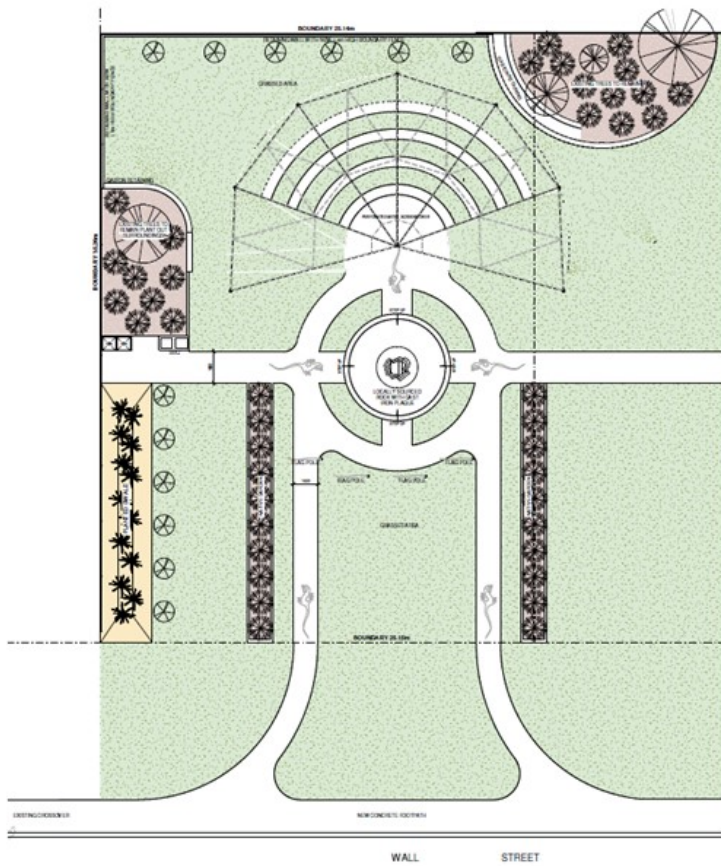
or drop it into the Shire Administration Office. The office is open between 8.45 and 4pm Monday to Friday. Submissions close on the 25 March 2019 at 4pm.

### Proposed Site Plan





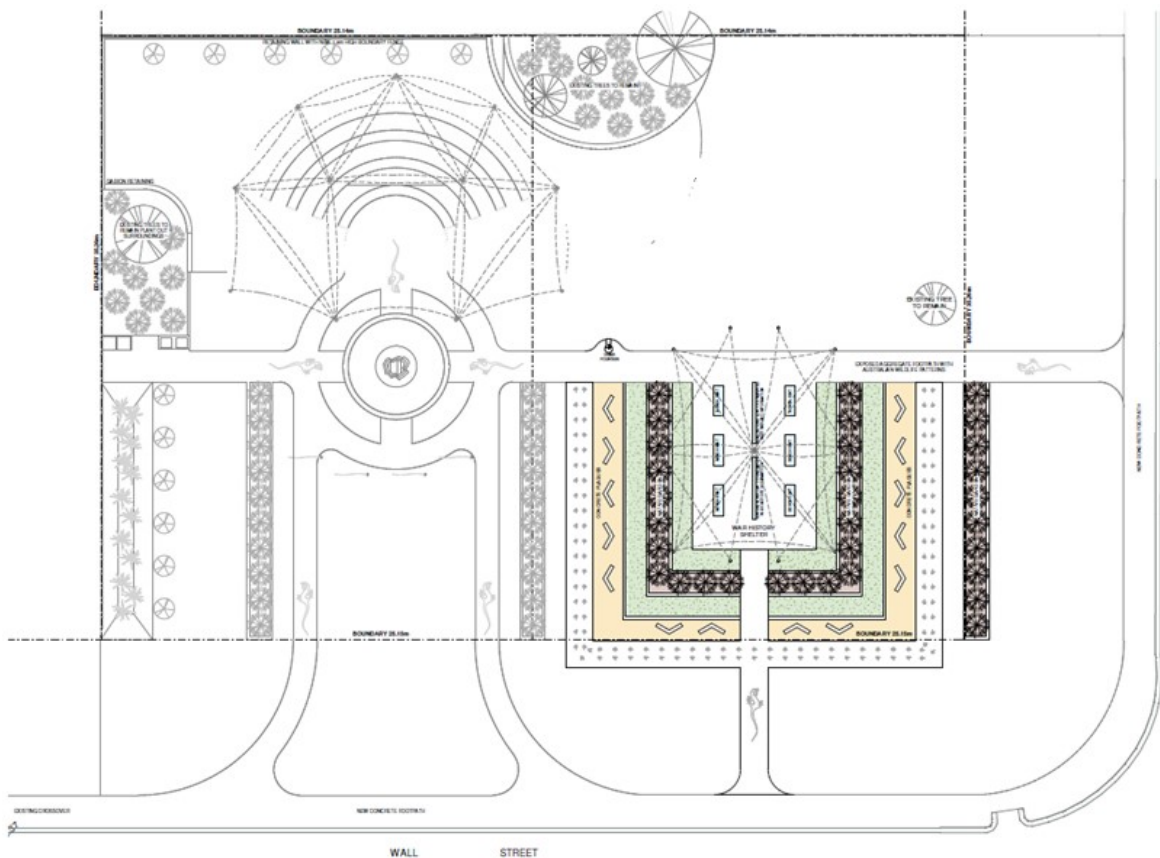
# Proposed Site Plans - Memorial Park



No.	Description	Rev.
1	PROPOSED KPI PARK	1.0

**Project Name:**  
PROPOSED KPI PARK  
ON LOT 556/557, LENON STREET, WILUNA  
FOR THE SHIRE OF WILUNA

STAGE 1 - ALTERNATIVE ROOF OPTION			
Project Number	556/557	Sheet Number	A001
Rev.	1.0	Client Name	A
Date	10/01/2023	Scale	1:100



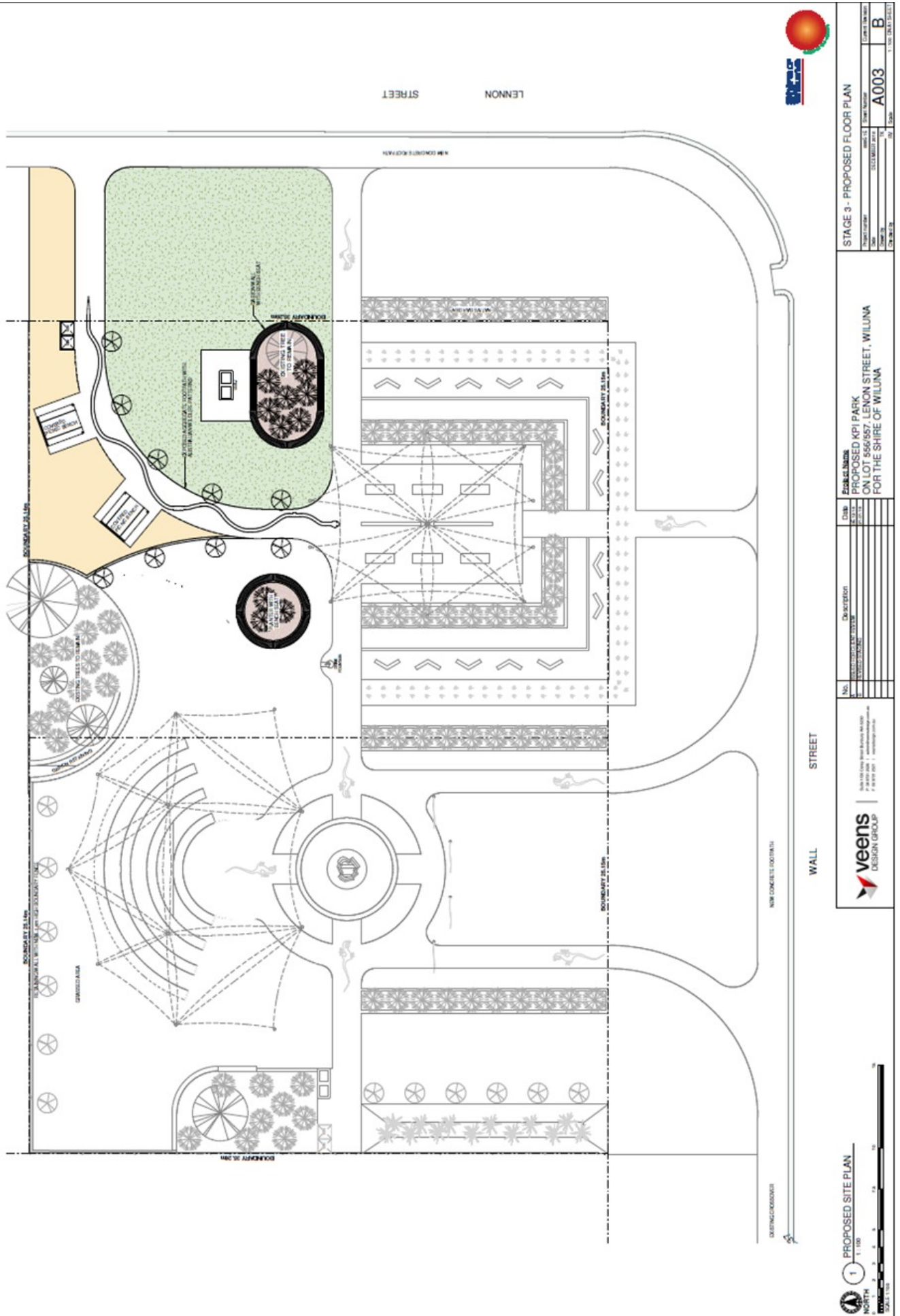
No.	Description	Rev.
1	PROPOSED KPI PARK	1.0

**Project Name:**  
PROPOSED KPI PARK  
ON LOT 556/557, LENON STREET, WILUNA  
FOR THE SHIRE OF WILUNA

STAGE 2 - PROPOSED FLOOR PLAN			
Project Number	556/557	Sheet Number	A002
Rev.	1.0	Client Name	B
Date	10/01/2023	Scale	1:100



# Proposed Site Plans - Playground

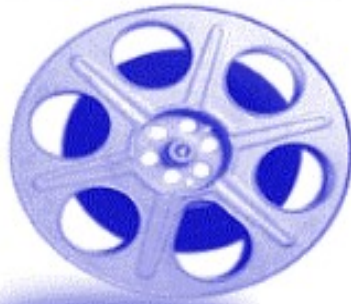




PROPOSED CONCEPTUAL SITE PLAN  
1:200

[illegible]





## MOVIE MATINEE

Date: Wednesday 13th March

Time: 9.45am to 12.00 Noon

Place: Recreation Centre

For the Home and Community Care Clients  
(HACC)







# TIDY GARDENS

## COMPETITION 2019

Be In It To Win It  
with Judging on 27th March

For the  
Best Garden  
or the  
Most Improved Garden  
In Wiluna and Bondini

Best Garden will win a \$500.00 voucher  
Most Improved Garden will win \$250.00 voucher

**REMEMER THERE ARE NO GARDENING  
MISTAKES ONLY EXPERIMENTS**

**CHECK OUT NEXT MONTHS EDITION OF  
THE WILUNA WIRE TO SEE WHO IS A  
WINNER**

**CONTACT THE SHIRE FOR MORE  
INFORMATION  
9981 8000**







## Shire of Wiluna Presents

### 13 March 2019 — The Pirates

2.45pm - 4.30

Always outclassed by fierce opponents such as Cutlass Liz, Peg Leg Hastings, and Black Bellamy, the hopeless, Pirate Captain, decides it's high time he won the prestigious 1837 "Pirate of the Year Award". However this is easier said than done, as the determined captain embarks on a foolhardy quest along with his ragtag crew of misfits which involves Queen Victoria herself, an extremely rare dodo bird, and a brilliant young scientist named Charles Darwin. Will Pirate Captain manage to putt off a surprise victory?

Rated G — Suitable for all ages. Very mild comedic violence and coarse language

### 27 March 2019 — Monster Trucks

2.30pm to 4.30pm

Looking for any way to get away from the life and town he was born into, Tripp (Lucas Till), a high school senior, builds a Monster Truck from bits and pieces for scrapped cars. After an accident at a nearby oil drilling site displaces a strange and subterranean creature with a taste and a talent for speed, Tripp may have just found the key to getting out of town and a most unlikely friend. Melding cutting edge visual effect and state of the art CGI, Monster Trucks is an action filled adventure for the whole family that will keep you on the edge of your seat and ultimately touch your heart.

Rated PG — Parental Guidance Suggested for action, peril, brief scary images, and some rude humor

CHILDREN SEVEN AND UNDER WILL NEED TO BRING A PARENT WHEN WE ARE  
SHOWING  
G AND PG RATED MOVIES.

THERE WILL BE NO EXCEPTIONS DON'T SEND THE BABIES DOWN UNLESS YOU COME  
WITH THEM, THE LAST THING WE WANT IS TO UPSET THE LITTLE ONES BY TURNING  
THEM AWAY AT THE DOOR.

Tamihana: Recreation & Leisure Centre Coordinator





## **Maintenance Officer - Reticulation**

Keep the water flowing to keep our lawns, gardens and trees alive!

Maintain/refurbish existing reticulation systems. Program and carry out the installation of new reticulation systems, planting, and other horticulture (trimming of trees).

Enquiries can be made of Angela Hoy, (08) 9981 8000 or [emts@wiluna.wa.gov.au](mailto:emts@wiluna.wa.gov.au)

Download the position description and apply at:

<https://applynow.net.au/jobs/109128>





## **Customer Service Officer - Canning-Gunbarrel Discovery Centre**

The Shire of Wiluna is seeking a customer service officer to be part of the new Canning-Gunbarrel Discover Centre team.

The position will suit an applicant with experience working with the public in a customer service, front of house, or tourism-focused role.

Duties will include:

- Providing advice and support to tourists and visitors to the Canning-Gunbarrel Discovery Centre.
- Selling merchandise and other tourism products
- Undertaking cash receipting duties and reconciling with other data sources (including SAM).
- Providing front of house customer service function.
- Assisting with the installation and decommissioning of displays.
- Supporting the Centre and Shire Management as required.
- Assisting the Art Centre Coordinator and local artists as required.

As this is a position in the tourist industry, the ability to work on weekends and holidays (if required) will be essential.

Enquiries can be made of (and an information pack including instructions on how to apply can be obtained from) Warren Olsen, (08) 9981 8000 or [dceo@wiluna.wa.gov.au](mailto:dceo@wiluna.wa.gov.au)

**Applications close at 4pm on Wednesday, 13 March 2019**



**~ SAVE THE DATE ~**

# MURCHISON INNOVATION DAYS

**27-28 MARCH 2019**

Invitation to all Southern Rangelands pastoralists & communities

**CONTEMPORARY SOLUTIONS & NEW  
TECHNOLOGIES IN PASTORAL ENVIRONMENTS**

## **PROPOSED PROGRAM**

### **1. WEDNESDAY 27 MARCH 2019 - MURCHISON SETTLEMENT**

- Radio Quiet Zone requirements and compatibility
- Digital connectivity
- Virtual fencing and remote sensing
- Electric fencing
- Vermin control / wild dogs
- Pastoral lands reform update
- Wild dog control / fencing
- Digital connectivity trial results and learnings - weather monitoring, water monitoring and pump automation

### **2. THURSDAY 28 MARCH 2019 - WOOLEEN STATION**

- Rangelands regeneration

## **REPRESENTATIVES / SPEAKERS**

- CSIRO
- CRT - Great Northern Rural
- Wooleen Station
- Meat and Livestock Australia (MLA)
- Murchison House Station / Origo
- Mid West Development Commission
- Department of Primary Industries and Regional Development
- Various suppliers

Hosted by the Shire of Murchison in partnership with Wooleen Station and the Mid West Development Commission



Please RSVP (by 13 March 2019)

Shire of Murchison

Rose Jones - Deputy CEO

08 9963 7999

[dceo@murchison.wa.gov.au](mailto:dceo@murchison.wa.gov.au)





# Wiluna Remote Community School (WRCS) Training Centre News for February 2019



The Training Centre is commencing its third year of operations in 2019 and is off to a flying start.

We commenced our new course for 2019, a Certificate II in Rural Operations. We have 12 students, made up of WRCS school VET students and 8 adults from DSS and MEEDAC. The students completed week spraying and chemical application units in early February and then tyre repair and wheel balancing units last week. They have all done very well.

Andy Marshal and Alwyn are our TAFE lecturers this year and they are doing a great job. The students and Elders have given us excellent feedback on how well Andy and Alwyn are going. Malya !

In March, we do chainsaw training, where some Shire staff will be joining us, and then a first aid course with Wade, which was a big success last year.

As always, thank you to our partners for your terrific support. Wiluna Shire, Blackham Resources Matilda mine, CRTAFE, DSS GNRBA and now MEEDAC are all helping us to train Wiluna residents. We couldn't do it without your support. Thank you also to the Year 4 - 6 class at the School for flagging all the cactus across the road from the school. Malya Flaggging !



Left: Blondie spraying cactus as Matilda Village



Right: Deon spraying Hudson Cactus



Left: Malik spraying Rope Cactus



# Wiluna Remote Community School (WRCS) Training Centre News for February 2019



Miranda flagging cactus sites



Left; Nathan Redmond spraying Coral Cactus

Right: Nathan Redmond spraying Coral Cactus







Left; Stewart Long spraying Hudson Cactus along the road



Wiluna Remote Community School  
Year 4 Class flagging cactus



Rita, Caroline and Lena visiting  
Andy from CRTAFE at the  
Training Centre



# March Fun Facts

March is the third month of the Gregorian Calendar



Each year March and June end on the same day of the week



March's birthstones are aquamarine and the bloodstone. Both these stones represent courage.

March is named after Mars, the Roman god of war as it was the month in which the military campaigning season got under way after winter

It's birth flower is the Daffodil, which was brought to Britain by the Romans who thought they had healing powers.





Route: Perth (PER)- Mount Magnet (MMG)- Meekatharra (MKR)-Wiluna (WUN)- Perth (PER)														
MONDAY					TUESDAY					WEDNESDAY				
FLT	DEP	FROM	TO	ARR	FLT	DEP	FROM	TO	ARR	FLT	DEP	FROM	TO	ARR
HK1935	0735	PER	WUN	0935						HK1935	0735	PER	WUN	0920
	1005	WUN	MKR	1045							0950	WUN	MKR	1020
	1130	MKR	MMG	1210							1105	MKR	MMG	1140
	1240	MMG	PER	1400							1210	MMG	PER	1330
THURSDAY					FRIDAY					SATURDAY				
FLT	DEP	FROM	TO	ARR	FLT	DEP	FROM	TO	ARR	FLT	DEP	FROM	TO	ARR
					HK1935	1100	PER	WUN	1300					
						1330	WUN	MKR	1410					
						1455	MKR	MMG	1535					
						1605	MMG	PER	1725					
										SUNDAY				

Skippers Aviation is proudly WA owned and operated and committed to supporting regional WA. Skippers will continue to offer local residents a discounted fare for all regional communities within it's network.

These Fares provide substantial discounts from the standard fare, but come subject to conditions:

- Locals must provide proof of residency
- Bookings must be made at least 60 days in advance of the travel dates
- Fares are NON-refundable
- No destination changes are permitted
- Name changes are not permitted
- No itinerary changes are permitted
- Fare is forfeited if the passenger fails to complete check in before the flight closure time (ie 30minutes prior to the scheduled departure time)
- Children, Infants and unaccompanied minors Children between 2 and 12 years old need to be booked as a child

As with all fares, bookings are subject to seat availability on the desired flight (s)

Skippers advises that these fares must be booked with "Central Reservations" on 1300 729 924 or Email: [reservations@skippers.com.au](mailto:reservations@skippers.com.au).

If these fares don't suit (many of us don't have a 60 day planning horizon), try calling Jacki on 0438 565 065 to see what kind of deal you can get.....



# *Easy Irish Soda Bread with Raisins*



## Ingredients

4 cups of plain flour  
2 teaspoons baking soda  
1 teaspoon salt  
2 tablespoons sugar  
1.2/3 cups milk  
2 tablespoons of white vinegar  
1 cup of raisins or sultana's

## Instructions

1. Preheat the oven to 200c. Line a baking sheet with baking paper
2. Put the milk and vinegar in a bowl, stir with a spoon and let stand for 5 min. Stir with a spoon again
3. Put flour, baking soda, salt and sugar in another large bowl and stir to combine. Add the milk and vinegar mixture and raisins. Mix until all flour is incorporated( when the mixture is too tough to mix with a spoon, start mixing with your hands).
4. Put the dough ball on the baking sheet. Shape the dough into flattened ball 8 inches in diameter. If the dough is too sticky to shape, wash your hands and then sprinkle your hands and the dough lightly with flour.
5. Cut an X on top of the dough circle with a sharp knife, about 1/2 inch deep.
6. Put the bread in the oven on the middle rack. Bake for 40 minutes, or until the crust is golden brown.





## *Cheese & Tomato Pinwheel Scones*



### **Ingredients**

3 cups of self-raising flour  
1/2 teaspoon salt  
2 cups of grated cheese  
1 cup of milk  
1/2 cup of soda water  
1/2 cup of tomato sauce  
50g chopped ham  
2 spring onions chopped.

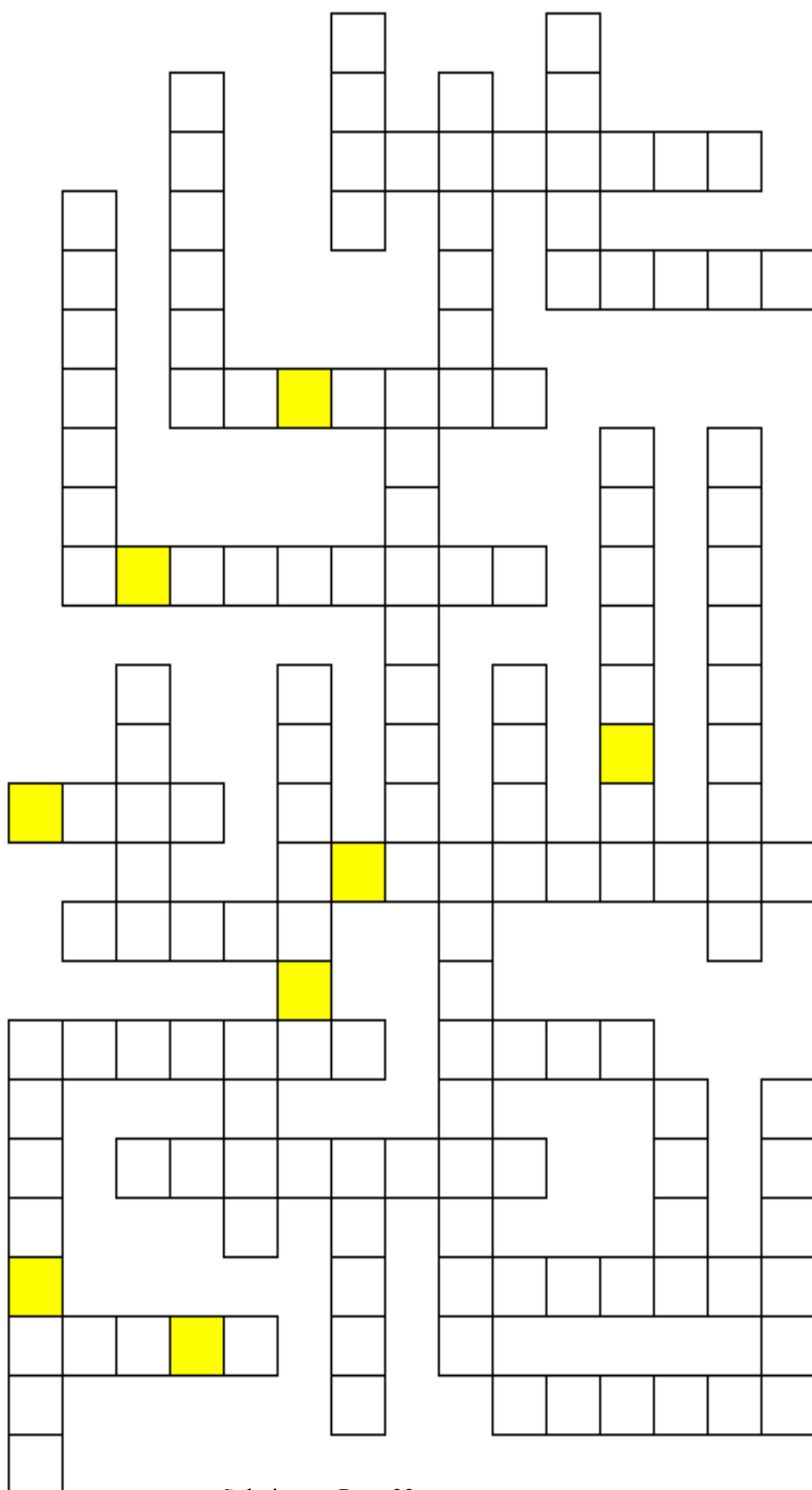
### **Ingredients**

1. Preheat oven to 200 C
2. Sift self-raising flour and salt into a mixing bowl. Stir in 1 cup of the grated cheese. Pour in milk and soda water and mix to form a soft dough.
3. Turn dough onto a floured board and roll out to a rectangle 1cm thick (approx. 30cm x 40cm)
4. Spread tomato sauce over the dough to within 1cm of the edges. Sprinkle over remaining grated cheese, chopped ham and spring onions.
5. Gently roll from the long side to make a pinwheel. Cut into 12 pieces. Place close together, cut side up on a greased baking tray. Bake for 20-25 min until golden and cooked. Serve warm.



# CRISS CROSS PUZZLE

Can you fit the name of the musical instrument into the Grid? The letters in the yellow boxes will spell out another word.



### 4 letter words

DRUM  
HARP  
LUTE  
LYRE  
OBOE  
TUBA

### 5 letter words

BANJO  
BUGLE  
CELLO  
FLUTE  
ORGAN  
PIANO

6 letter words

CORNET  
GUITAR  
VIOLIN  
ZITHER

7 letter words

BASSOON  
CYMBALS  
PICCOLO  
TIMPANI  
TRUMPET

8 letter words

BAGPIPES  
CLARINET  
TRIANGLE  
TROMBONE

9 letter words

ACCORDION  
CASTANETS  
SAXOPHONE  
XYLOPHONE

10 letter word  
CONCERTINA

Solution on Page 33



# Inspiration

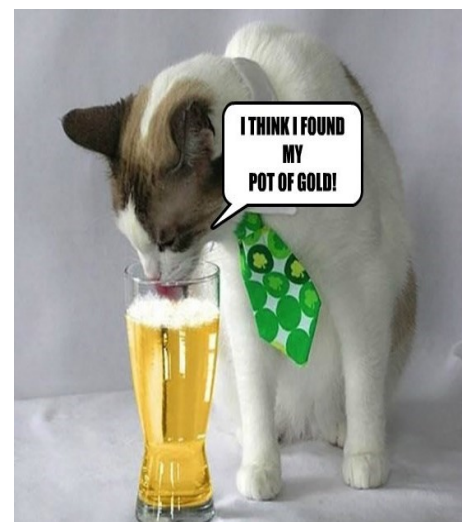
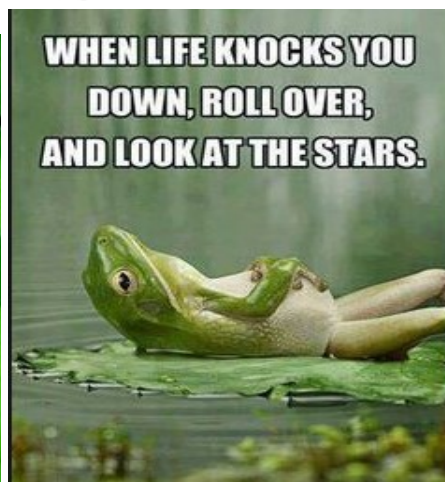
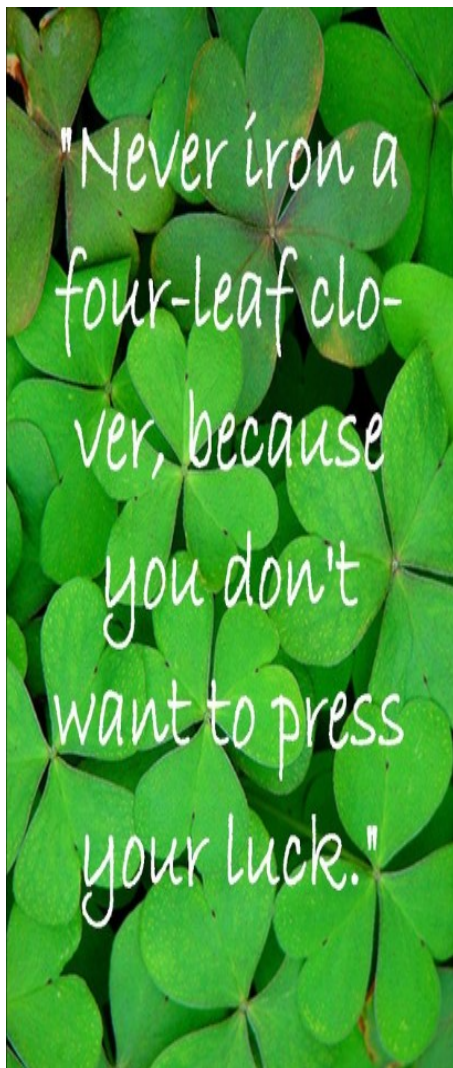
The most wasted  
of all days  
is the one  
without  
**Laughter**  
-E.E.Cummings

**LIFE IS  
BETTER  
WHEN  
YOU'RE  
LAUGHING**

IF YOU  
**LAUGH**  
A LOT,  
WHEN YOU GET OLDER  
YOUR WRINKLES WILL BE  
IN THE RIGHT PLACES.

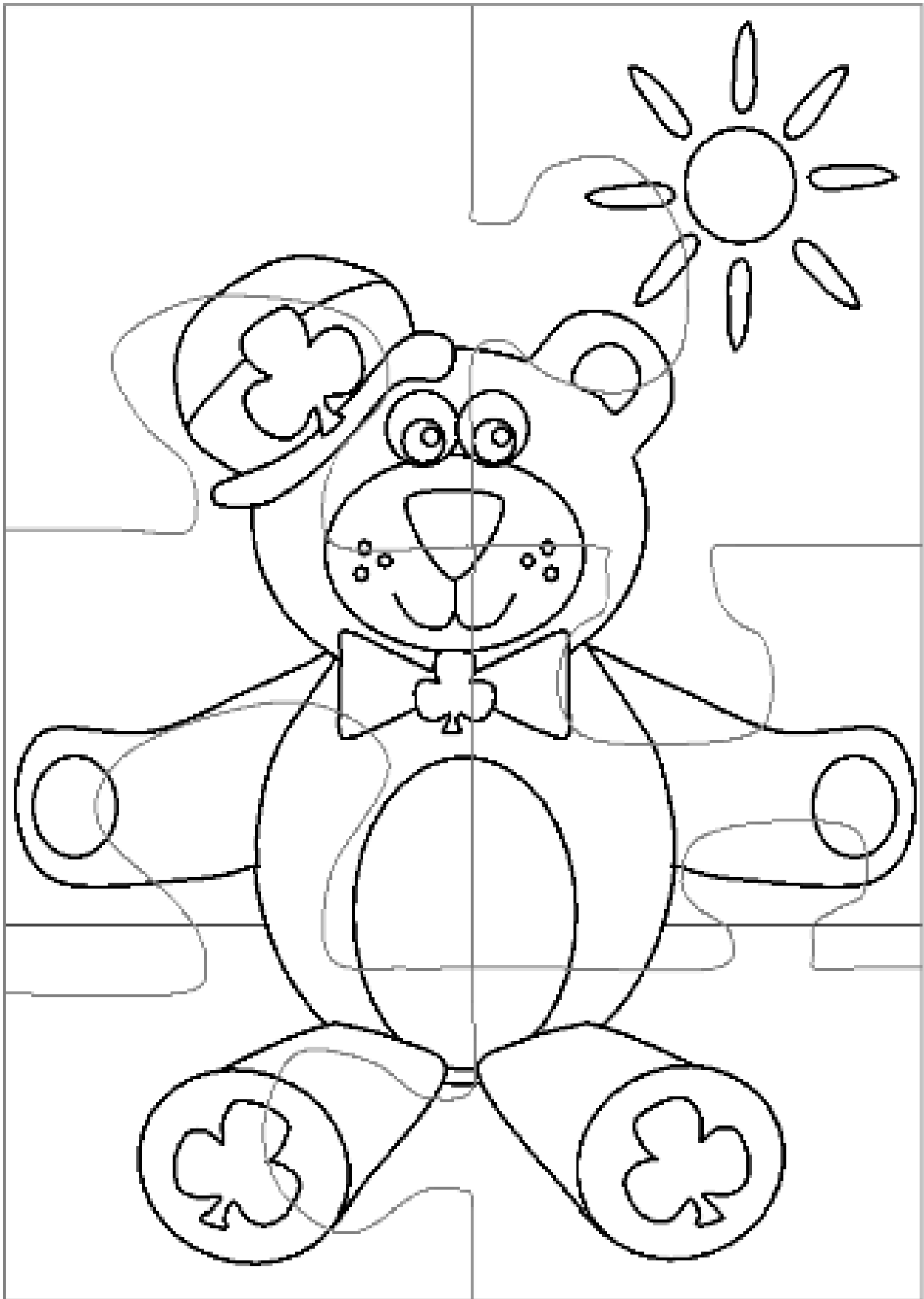


May the winds of Fortune sail you,  
may you sail a gentle sea.  
May it always be the other guy  
who says, "This drink's on me."



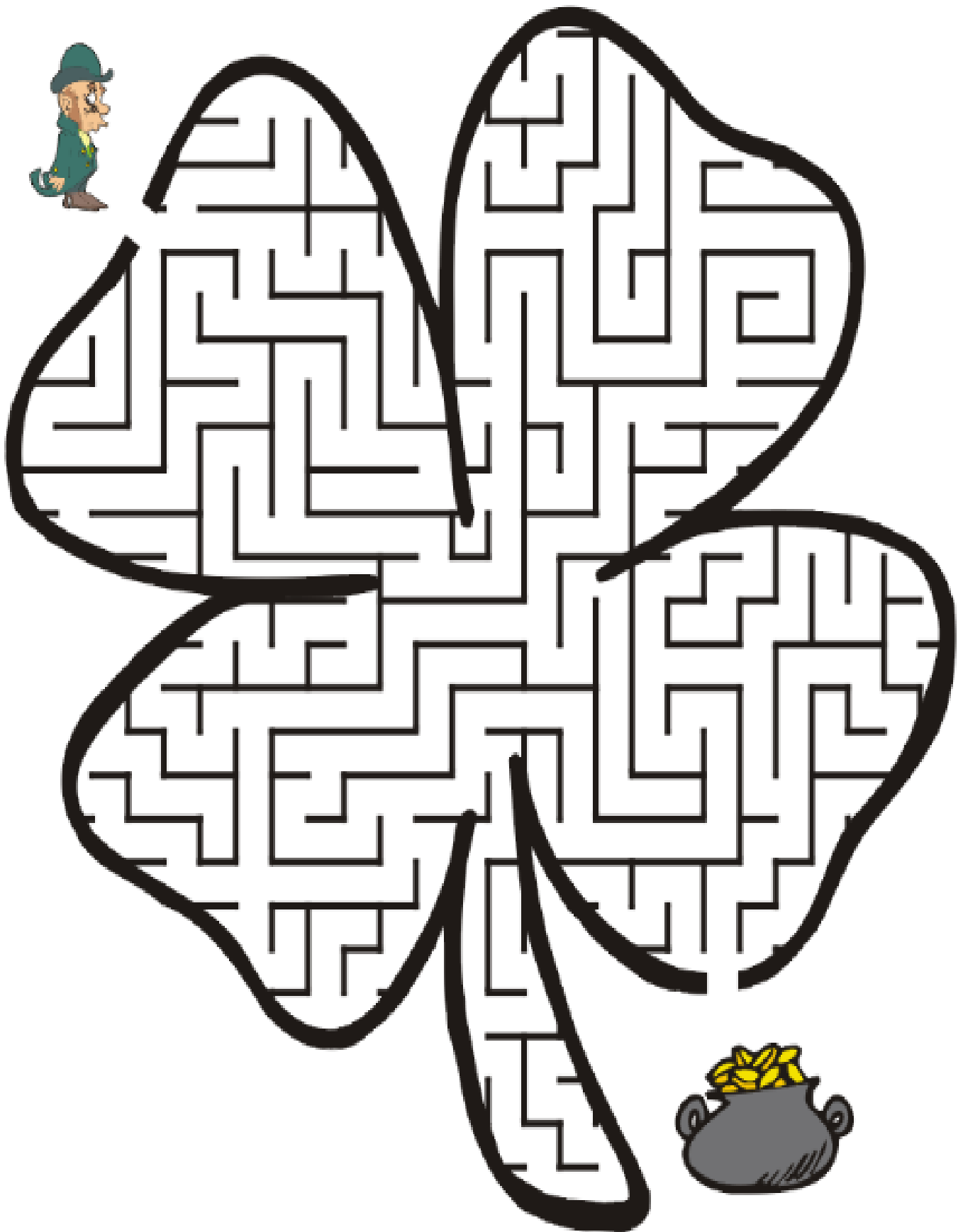
a good friend is like a  
**FOUR LEAF  
CLOVER**  
hard to find and  
**LUCKY**  
to have







## Help the Leprechaun find his pot of Gold





# CARBON FARMING

# INFORMATION SESSION

ON

29TH APRIL 2019

AT

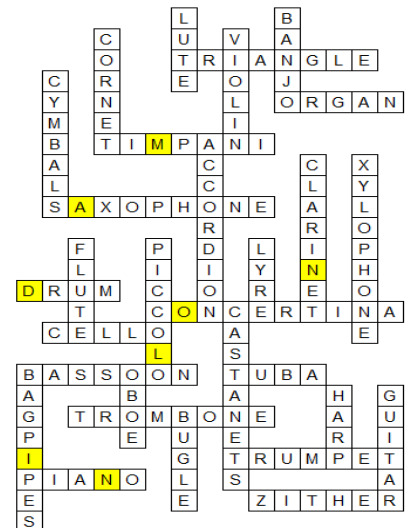
# MILROSE STATION

If you are interested there will be an open information session on Carbon Farming explaining the process and answering any questions that you may have and address your concerns. Presenting this information will be Harley Lacey and Kent Broad, Outback Carbon (both ex Pastoralists) plus a Government Representative.

A Commencement time to be decided.

The session will end with a BBQ and drinks, so bring your swag.

More Information to follow.







## Wiluna Buy and Sell

Do you have anything you want to buy or sell?  
You can advertise here for free.  
Forget Gumtree and Ebay, and all those freight charges.  
One mans' trash is another mans' treasure.  
Let's keep it local and we all benefit.



If you would like to advertise something please email the Shire on [aa@wiluna.wa.gov.au](mailto:aa@wiluna.wa.gov.au) with Wiluna Buy & Sell in the subject line. Please include a picture if you can and a detailed description. Please include your contact details.